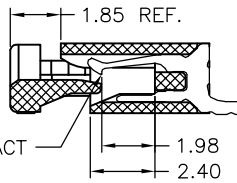
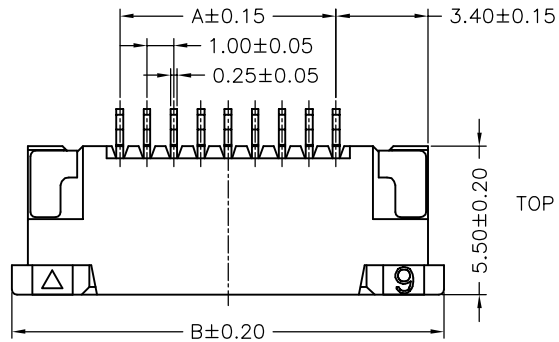


SUGGESTED PCB LAYOUT
(COMPONENT SIDE)

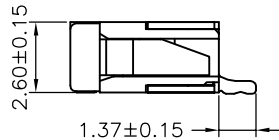
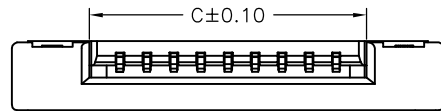
SPECIFICATIONS
 Current Rating: 0.5A AC,DC
 Voltage Rating: 50V AC,DC
 Temperature Range: $-25^{\circ}\text{C} \sim +85^{\circ}\text{C}$
 Contact Resistance: $30\text{m}\Omega$ Max.
 Insulation Resistance: $500\text{M}\Omega$ Min.
 Withstanding Voltage: 500V AC/minute
 Contacts: Phosphor Bronze/Tin-plated
 Solder Tabs: Brass/Tin-plated
 Housing: Nylon 6T,UL94V-0,Natural(Beige)
 Actuator: Nylon 6T,UL94V-0,Natural(Black)

Ordering Information & Dimensions

PART NO.	Dimensions			PART NO.	Dimensions		
	A	B	C		A	B	C
F1003WR-S-04PT	3.00	11.00	5.25	F1003WR-S-20PT	19.00	27.00	21.25
F1003WR-S-05PT	4.00	12.00	6.25	F1003WR-S-21PT	20.00	28.00	22.25
F1003WR-S-06PT	5.00	13.00	7.25	F1003WR-S-22PT	21.00	29.00	23.25
F1003WR-S-07PT	6.00	14.00	8.25	F1003WR-S-23PT	22.00	30.00	24.25
F1003WR-S-08PT	7.00	15.00	9.25	F1003WR-S-24PT	23.00	31.00	25.25
F1003WR-S-09PT	8.00	16.00	10.25	F1003WR-S-25PT	24.00	32.00	26.25
F1003WR-S-10PT	9.00	17.00	11.25	F1003WR-S-26PT	25.00	33.00	27.25
F1003WR-S-11PT	10.00	18.00	12.25	F1003WR-S-27PT	26.00	34.00	28.25
F1003WR-S-12PT	11.00	19.00	13.25	F1003WR-S-28PT	27.00	35.00	29.25
F1003WR-S-13PT	12.00	20.00	14.25	F1003WR-S-29PT	28.00	36.00	30.25
F1003WR-S-14PT	13.00	21.00	15.25	F1003WR-S-30PT	29.00	37.00	31.25
F1003WR-S-15PT	14.00	22.00	16.25	F1003WR-S-31PT	30.00	38.00	32.25
F1003WR-S-16PT	15.00	23.00	17.25	F1003WR-S-32PT	31.00	39.00	33.25
F1003WR-S-17PT	16.00	24.00	18.25	F1003WR-S-33PT	32.00	40.00	34.25
F1003WR-S-18PT	17.00	25.00	19.25	F1003WR-S-34PT	33.00	41.00	35.25
F1003WR-S-19PT	18.00	26.00	20.25				



TOP CONTACT
(ACTUATOR OPEN)

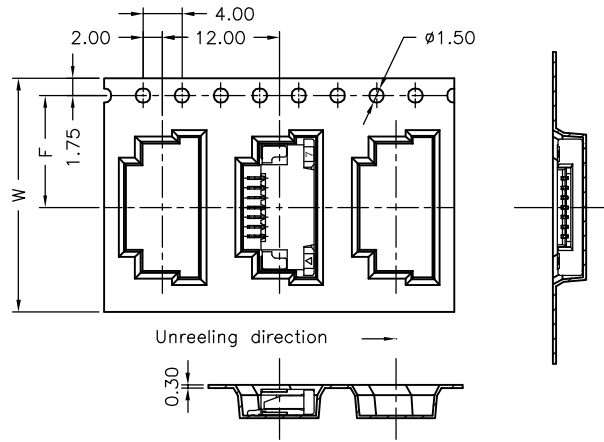


				JOINT TECH ELECTRONIC IND. CO., LTD. JOY DAY INDUSTRIAL CO., LTD.	
UNIT	SCALE	SHEET	TITLE:		
mm		1 of 2	1.00mm PITCH FFC/FPC CONNECTOR 90° SMT TYPE, ZIF, TOP CONTACT STYLE		
DRAWN BY		APPROVED BY			
李勤		董正一			
2006.03.09		2006.03.09			
REVISE		GENERAL TOLERANCE			
A2	2006.12.07				
A1	2006.04.26	X. $X \pm 0.25$	ANGLE \pm		
A0	2006.03.09	X. $XX \pm 0.15$			
REV.	DESCRIPTION	DATE	X. $XXX \pm 0.05$		

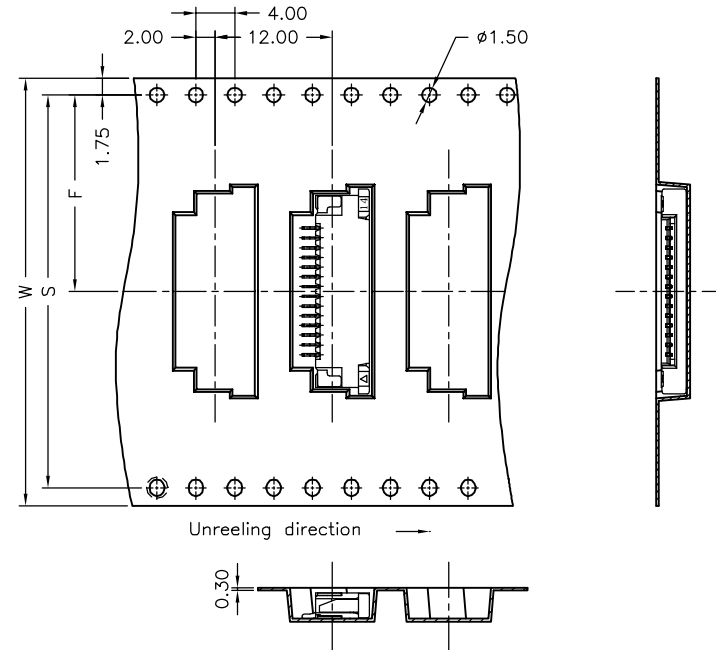
DRAW NO.: F1003WR-S-XPT

REV. A2

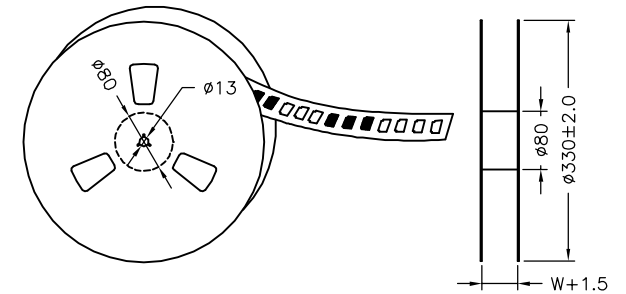
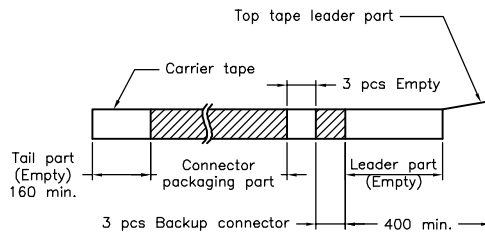
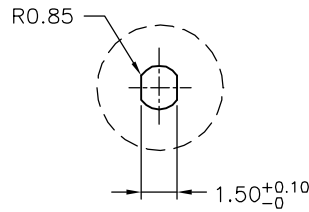
04~07 Contacts



08~34 Contacts



Number of Contacts	W±0.3	F±0.1	S±0.1	Q'ty/Reel
04P	24	11.50	/	1,500
05P	24	11.50		1,500
06P	24	11.50		1,500
07P	24	11.50		1,500
08P	32	14.20	28.40	1,500
09P	32	14.20	28.40	1,500
10P	32	14.20	28.40	1,500
11P	32	14.20	28.40	1,500
12P	32	14.20	28.40	1,500
13P	44	20.20	40.40	1,500
14P	44	20.20	40.40	1,500
15P	44	20.20	40.40	1,500
16P	44	20.20	40.40	1,500
17P	44	20.20	40.40	1,500
18P	44	20.20	40.40	1,500
19P	44	20.20	40.40	1,500
20P	44	20.20	40.40	1,500
21P	44	20.20	40.40	1,500
22P	44	20.20	40.40	1,500
23P	44	20.20	40.40	1,500
24P	44	20.20	40.40	1,500
25P	44	20.20	40.40	1,500
26P	56	26.20	52.40	1,500
27P	56	26.20	52.40	1,500
28P	56	26.20	52.40	1,500
29P	56	26.20	52.40	1,500
30P	56	26.20	52.40	1,500
31P	56	26.20	52.40	1,500
32P	56	26.20	52.40	1,500
33P	56	26.20	52.40	1,500
34P	56	26.20	52.40	1,500



		UNIT	SCALE	SHEET	
		mm		2 of 2	
		DRAWN BY		APPROVED BY	
		李勤		董正一	
		2006.03.09		2006.03.09	
		GENERAL TOLERANCE			
A2	REVISE	2006.12.07			
A1	REVISE	2006.04.26	X. X±0.25	ANGLE±	
A0	NEW RELEASE	2006.03.09	X. XX±0.15		
REV.	DESCRIPTION	DATE	X. XXX±0.05		
TITLE: 1.00mm PITCH FFC/FPC CONNECTOR 90°SMT TYPE, ZIF, TOP CONTACT STYLE TAPING SPEC.					
DRAW NO. : F1003WR-S-XPT					REV. A2