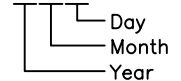


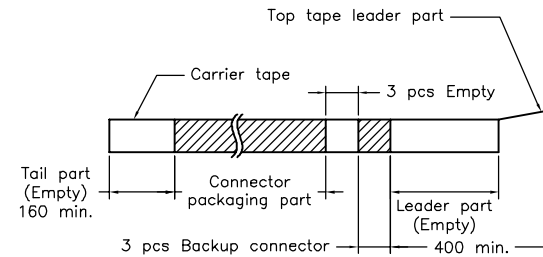
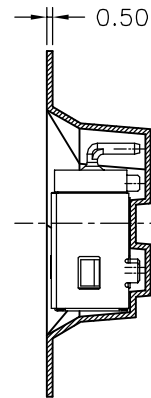
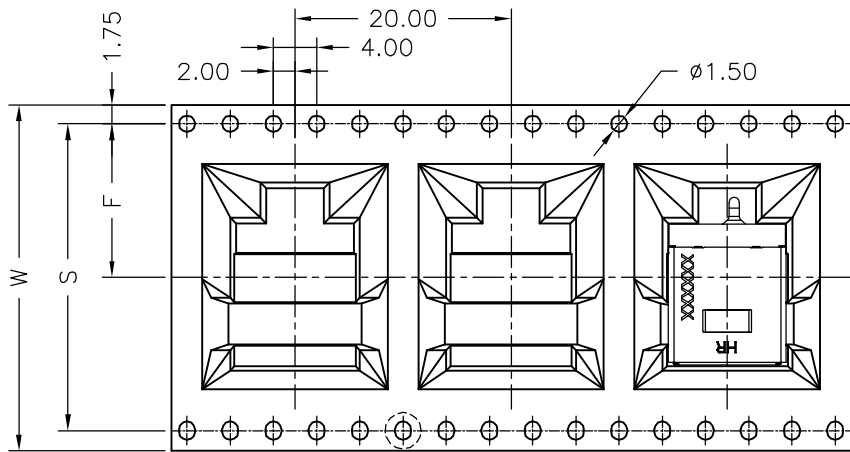
SPECIFICATIONS

Current Rating: 7A AC,DC
 Voltage Rating: 20V AC,DC
 Temperature Range: -40°C ~ +105°C
 Contact Resistance: 30mΩ Max.
 Insulation Resistance: 100MΩ Min.
 Withstanding Voltage: 500V AC/minute
 Date Code: XXXXXX

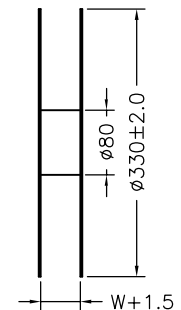
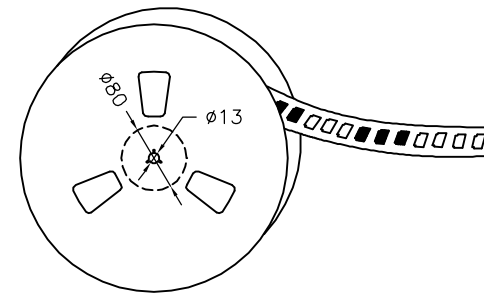
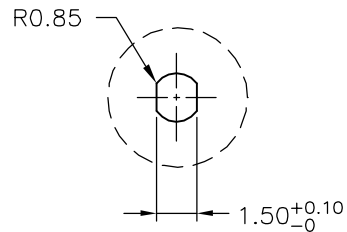
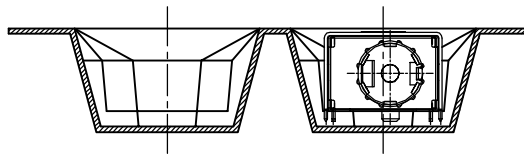


No.	Description	Material	Color
A	Insulator	LCP,UL94V-0	Black
B	Pin	Brass/Gold-flash	---
C	Spring terminal	Phosphor Bronze/Gold-flash	---
D	Singal terminal	Phosphor Bronze/Gold-flash	---
E	Shell	Brass/Nickel-plated	---
F	Ground shell	Stainless	---
G	Fix power pin	Brass/Gold-flash	---


			UNIT	SCALE	SHEET	TITLE:
			mm		1 of 2	
DRAWN BY 歐陽小強 2009.08.04			APPROVED BY 謝瑞清 2009.08.04		DC POWER JACK	
A0 NEW RELEASE 2009.08.04 REV. DESCRIPTION DATE			X. X±0.25	ANGLE±	DRAW NO.: DC0001-L1G10	
			X. XX±0.15			
			X. XXX±0.05			



Unreeling direction →



W±0.3	F±0.1	S±0.1	Q'ty/Reel
32	14.20	28.40	300

 JOINT TECH ELECTRONIC IND. CO., LTD. JOY DAY INDUSTRIAL CO., LTD.			
UNIT	SCALE	SHEET	TITLE:
mm		2 of 2	DC POWER JACK
DRAWN BY	APPROVED BY		
歐陽小強	謝瑞清		
	2009.08.04	2009.08.04	
GENERAL TOLERANCE			
	X.X±0.25	ANGLE±	
A0	NEW RELEASE	2009.08.04	
REV.	DESCRIPTION	DATE	
	X.XX±0.15		
	X.XXX±0.05		
DRAW NO. :			REV.
DC0001-L1G10			A0