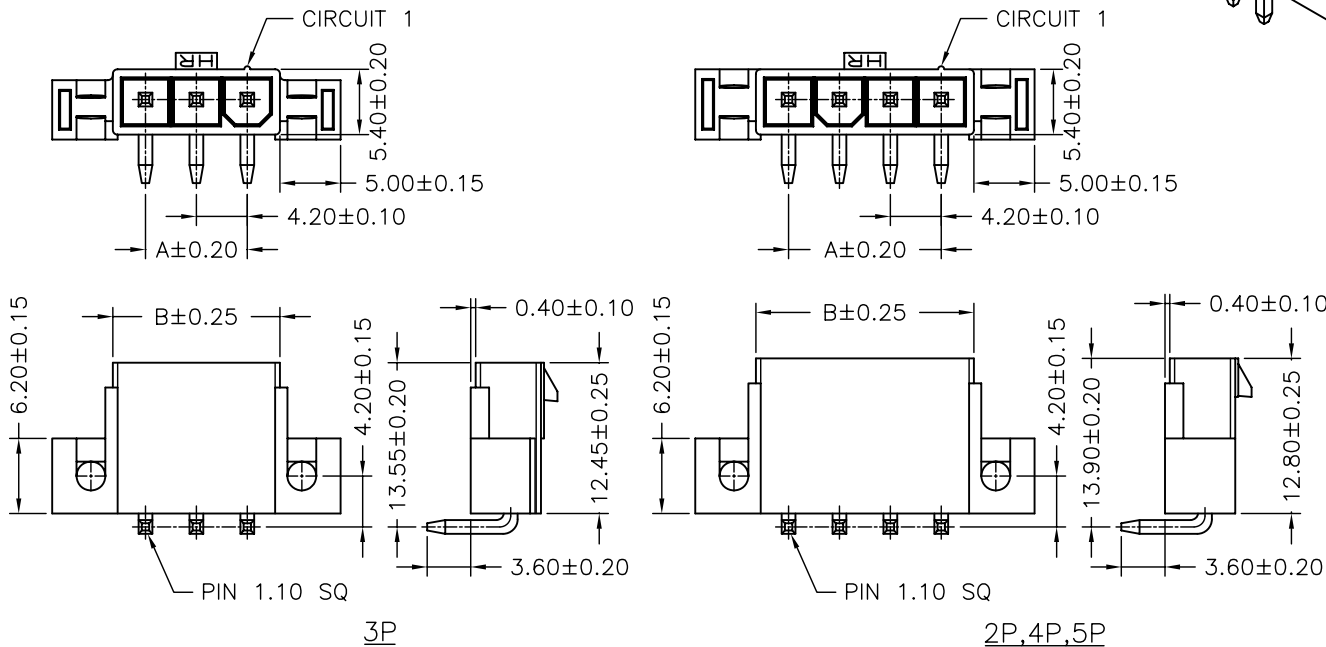


SPECIFICATIONS

Current Rating: 9A AC,DC
 Voltage Rating: 600V AC,DC
 Temperature Range: -25°C ~ +85°C
 Contact Resistance: 10mΩ Max
 Insulation Resistance: 1000MΩ Min
 Withstanding Voltage: 1500V AC/minute
 Pin Material: Brass/Tin-plated
 Material: Nylon 66,UL94V-2
 Color: Natural(Translucent)

Ordering Information & Dimensions

PART NO.	Dimensions	
	A	B
C4255WR-E-02P	4.20	9.60
C4255WR-E-03P	8.40	13.80
C4255WR-E-04P	12.60	18.00
C4255WR-E-05P	16.80	22.20



			JOINT TECH ELECTRONIC IND. CO., LTD. JOY DAY INDUSTRIAL CO., LTD.	
UNIT	SCALE	SHEET	TITLE:	
mm		1 of 1	4.20mm PITCH 90° WAFER WITH EAR, SINGLE ROW, MINI-FIT	
DRAWN BY	APPROVED BY			
董正一	董正一			
2003.01.23	2003.01.23			
GENERAL TOLERANCE				
	X.X±0.25	ANGLE±		
B0	NEW RELEASE	2006.06.07		
REV.	DESCRIPTION	DATE		
			DRAW NO. : C4255WR-E-XP	
			REV. B0	