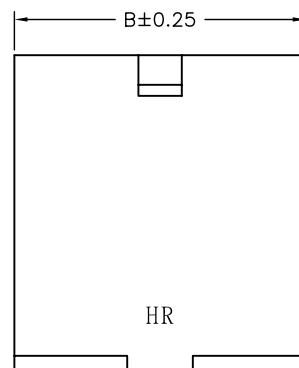
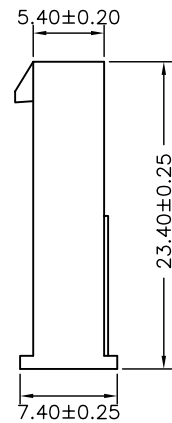
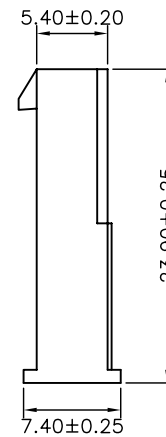


3P



2P,4P,5P



**SPECIFICATIONS**

Current Rating: 9A AC,DC  
 Voltage Rating: 600V AC,DC  
 Temperature Range: -25°C ~ +85°C  
 Contact Resistance: 10mΩ Max  
 Insulation Resistance: 1000MΩ Min  
 Withstanding Voltage: 1500V AC/minute  
 Material: Nylon 66,UL94V-2  
 Color: Natural(Translucent)

**Ordering Information & Dimensions**

PART NO.	Dimensions	
	A	B
C4255HMA-02P	4.20	9.60
C4255HMA-03P	8.40	13.80
C4255HMA-04P	12.60	18.00
C4255HMA-05P	16.80	22.20

				JOINT TECH ELECTRONIC IND. CO., LTD. JOY DAY INDUSTRIAL CO., LTD.	
UNIT	SCALE	SHEET	TITLE:		
mm		1 of 1	4.20mm PITCH HOUSING-PLUG, SINGLE ROW, MINI-FIT		
DRAWN BY	APPROVED BY				
李勤	董正一				
2006.06.07	2006.06.07				
GENERAL TOLERANCE					
A0	NEW RELEASE	2006.06.07	X.X±0.25	ANGLE±	
REV.	DESCRIPTION	DATE	X.XX±0.15		
			X.XXX±0.05		
		DRAW NO. :		REV.	
		C4255HMA-XP		A0	