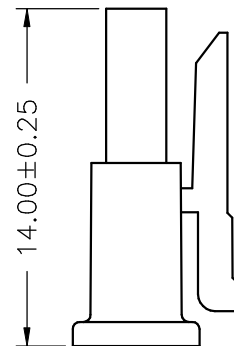
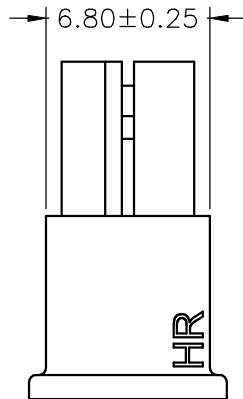
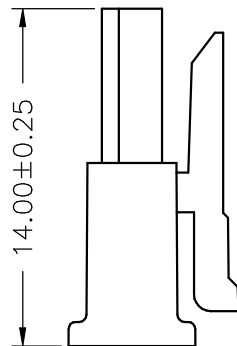
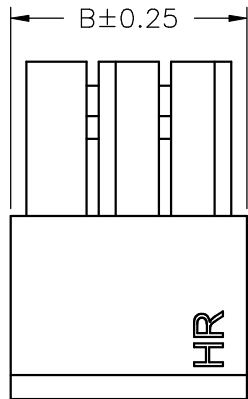
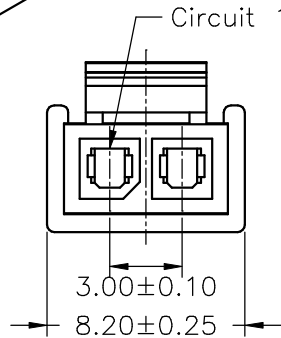
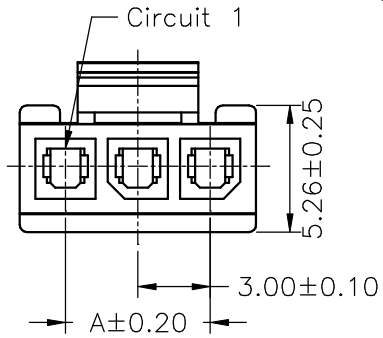


**SPECIFICATIONS**

Current Rating: 5A AC,DC  
 Voltage Rating: 250V AC,DC  
 Temperature Range: -25°C ~ +85°C  
 Contact Resistance: 10mΩ Max  
 Insulation Resistance: 1000MΩ Min  
 Withstanding Voltage: 1500V AC/minute  
 Material: Nylon 66,UL94V-2  
 Color: Black



3P~12P

2P

**Ordering Information & Dimensions**

PART NO.	Dimensions	
	A	B
C3030HF-2P	3.00	6.80
C3030HF-3P	6.00	9.80
C3030HF-4P	9.00	12.80
C3030HF-5P	12.00	15.80
C3030HF-6P	15.00	18.80
C3030HF-7P	18.00	21.80
C3030HF-8P	21.00	24.80
C3030HF-9P	24.00	27.80
C3030HF-10P	27.00	30.80
C3030HF-11P	30.00	33.80
C3030HF-12P	33.00	36.80

UNIT	SCALE	SHEET	TITLE:
mm		1 of 1	<b>3.00mm PITCH HOUSING-RECEPTACLE, SINGLE ROW, MICRO-FIT</b>
DRAWN BY	APPROVED BY		
董正一	董正一		
2002.08.13	2002.08.13		
GENERAL TOLERANCE			
		ANGLE±	
B0	NEW RELEASE	2005.12.14	DRAW NO. : C3030HF-XP
REV.	DESCRIPTION	DATE	
		X. X±0.25	REV. B0
		X. XX±0.15	
		X. XXX±0.05	