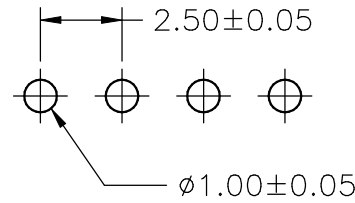
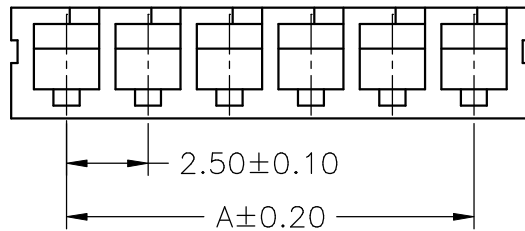
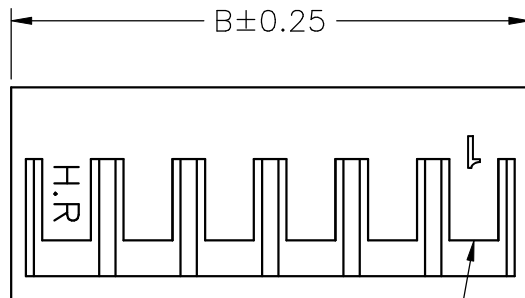


**SPECIFICATIONS**

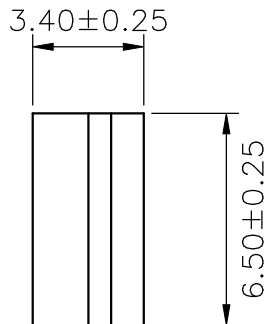
Current Rating: 3A AC,DC  
 Voltage Rating: 250V AC,DC  
 Temperature Range: -25°C ~ +85°C  
 Contact Resistance: 10mΩ Max  
 Insulation Resistance: 1000MΩ Min  
 Withstanding Voltage: 800V AC/minute  
 Material: Nylon 66,UL94V-0  
 Color: Natural(White)



P.C.B LAYOUT



Circuit 1



**Ordering Information & Dimensions**

PART NO.	Dimensions	
	A	B
B2513HR-2P	2.50	5.90
B2513HR-3P	5.00	8.40
B2513HR-4P	7.50	10.90
B2513HR-5P	10.00	13.40
B2513HR-6P	12.50	15.90
B2513HR-7P	15.00	18.40
B2513HR-8P	17.50	20.90
B2513HR-9P	20.00	23.40
B2513HR-10P	22.50	25.90
B2513HR-11P	25.00	28.40
B2513HR-12P	27.50	30.90
B2513HR-13P	30.00	33.40
B2513HR-14P	32.50	35.90
B2513HR-15P	35.00	38.40
B2513HR-16P	37.50	40.90

UNIT	SCALE	SHEET	TITLE:
mm		1 of 1	<b>2.50mm PITCH 90° HOUSING</b>
DRAWN BY	APPROVED BY		
董正一	董正一		
2001.02.01	2001.02.01		
GENERAL TOLERANCE			
X. X±0.25	ANGLE±		
B0	NEW RELEASE	2005.12.08	DRAW NO. : B2513HR-XP
REV.	DESCRIPTION	DATE	
X. XX±0.15			REV.
X. XXX±0.05			B0