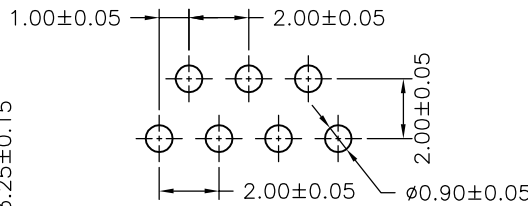
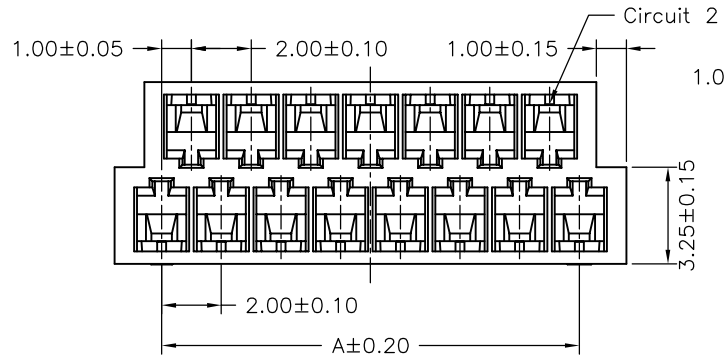
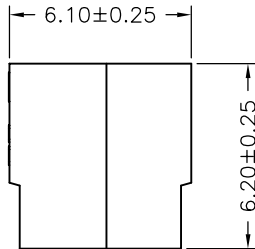


SPECIFICATIONS

Current Rating: 2A AC,DC
 Voltage Rating: 250V AC,DC
 Temperature Range: -25°C ~ +85°C
 Contact Resistance: 20mΩ Max
 Insulation Resistance: 1000MΩ Min
 Withstanding Voltage: 800V AC/minute
 Material: Nylon 46,UL94V-0
 Color: Natural(Black)



P.C.B LAYOUT



Ordering Information & Dimensions

PART NO.	Dimensions	
	A	B
B2012HV-05P	4.00	7.15
B2012HV-07P	6.00	9.15
B2012HV-09P	8.00	11.15
B2012HV-11P	10.00	13.15
B2012HV-13P	12.00	15.15
B2012HV-15P	14.00	17.15
B2012HV-17P	16.00	19.15
B2012HV-19P	18.00	21.15
B2012HV-21P	20.00	23.15
B2012HV-23P	22.00	25.15
B2012HV-25P	24.00	27.15
B2012HV-27P	26.00	29.15
B2012HV-29P	28.00	31.15
B2012HV-31P	30.00	33.15

UNIT	SCALE	SHEET	TITLE:			
mm		1 of 1	2.00mm PITCH 180° DUAL ROW HOUSING			
DRAWN BY		APPROVED BY			DRAW NO.:	REV.
李勤 2007.05.04		謝瑞清 2007.05.04				
GENERAL TOLERANCE						
AO	NEW RELEASE	2007.05.04	X. X±0.25	ANGLE±		
REV.	DESCRIPTION	DATE	X. XX±0.15			
			X. XXX±0.05			