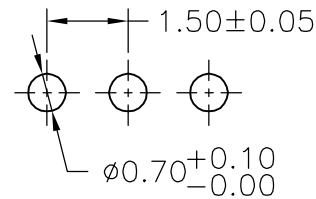
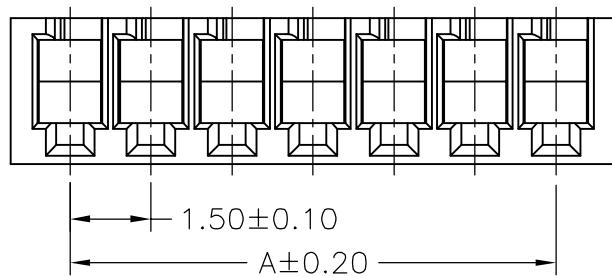


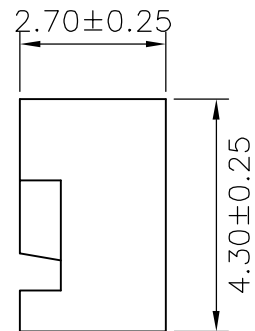
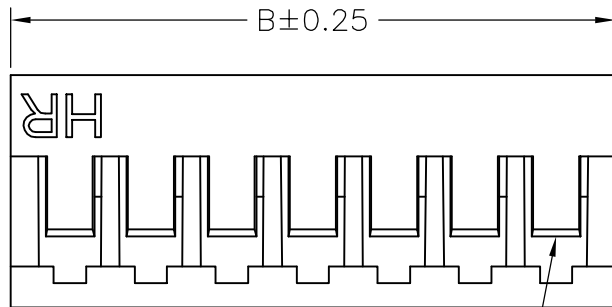
SPECIFICATIONS
 Current Rating: 1A AC,DC
 Voltage Rating: 200V AC,DC
 Temperature Range: -25°C ~ +85°C
 Contact Resistance: 20mΩ Max.
 Insulation Resistance: 500MΩ Min.
 Withstanding Voltage: 500V AC/minute
 Material: Nylon 66,UL94V-0
 Color: Natural(White)

Ordering Information & Dimensions

| PART NO. | Dimensions | |
|-------------|------------|-------|
| | A | B |
| B1502HR-02P | 1.50 | 3.70 |
| B1502HR-03P | 3.00 | 5.20 |
| B1502HR-04P | 4.50 | 6.70 |
| B1502HR-05P | 6.00 | 8.20 |
| B1502HR-06P | 7.50 | 9.70 |
| B1502HR-07P | 9.00 | 11.20 |
| B1502HR-08P | 10.50 | 12.70 |
| B1502HR-09P | 12.00 | 14.20 |
| B1502HR-10P | 13.50 | 15.70 |
| B1502HR-11P | 15.00 | 17.20 |
| B1502HR-12P | 16.50 | 18.70 |
| B1502HR-13P | 18.00 | 20.20 |
| B1502HR-14P | 19.50 | 21.70 |
| B1502HR-15P | 21.00 | 23.20 |



P.C.B. LAYOUT



Circuit 1

| | | | | | | | |
|------|-------------|------------|------------|-------------------|-------------|--------|-----------------------------|
| | | | | | | | |
| | | | | UNIT | SCALE | SHEET | TITLE: |
| | | | | mm | | 1 of 1 | 1.50mm PITCH 90° HOUSING |
| | | | | DRAWN BY | APPROVED BY | | |
| | | | | 董正一 | 董正一 | | |
| | | | | 2003.03.18 | 2003.03.18 | | |
| | | | | GENERAL TOLERANCE | | | |
| B1 | REVISE | 2007.04.24 | X.X±0.25 | ANGLE± | | | |
| B0 | NEW RELEASE | 2005.12.06 | X.XX±0.15 | | DRAW NO.: | | REV. B1 |
| REV. | DESCRIPTION | DATE | X.XXX±0.05 | | B1502HR-XP | | |