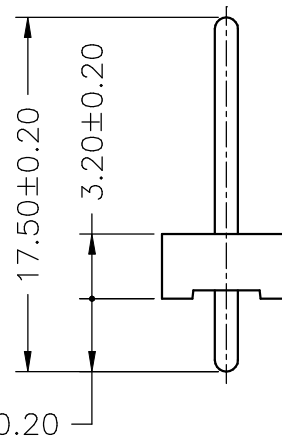
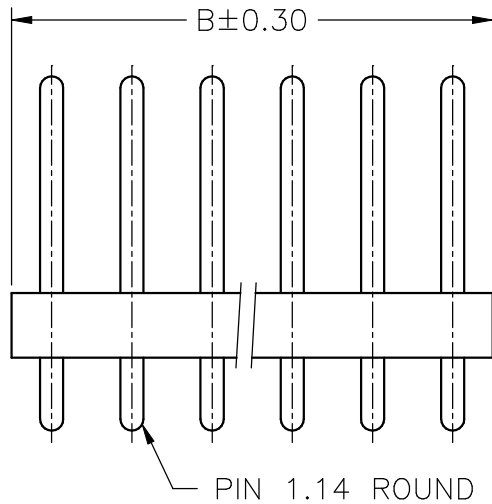
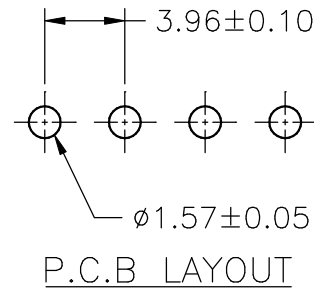
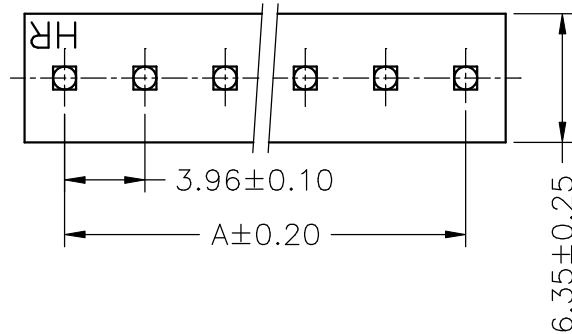


SPECIFICATIONS
 Current Rating: 7A AC,DC
 Voltage Rating: 250V AC,DC
 Temperature Range: -25°C ~ +85°C
 Contact Resistance: 10mΩ Max
 Insulation Resistance: 1000MΩ Min
 Withstanding Voltage: 1500V AC/minute
 Pin Material: Brass/Tin-plated
 Material: Nylon 66,UL94V-2
 Color: Natural(Translucent)

Ordering Information & Dimensions

PART NO.	Dimensions	
	A	B
A3960WVA-02PR	3.96	7.92
A3960WVA-03PR	7.92	11.88
A3960WVA-04PR	11.88	15.84
A3960WVA-05PR	15.84	19.80
A3960WVA-06PR	19.80	23.76
A3960WVA-07PR	23.76	27.72
A3960WVA-08PR	27.72	31.68
A3960WVA-09PR	31.68	35.64
A3960WVA-10PR	35.64	39.60
A3960WVA-11PR	39.60	43.56
A3960WVA-12PR	43.56	47.52
A3960WVA-13PR	47.52	51.48
A3960WVA-14PR	51.48	55.44
A3960WVA-15PR	55.44	59.40
A3960WVA-16PR	59.40	63.36
A3960WVA-17PR	63.36	67.32
A3960WVA-18PR	67.32	71.28
A3960WVA-19PR	71.28	75.24
A3960WVA-20PR	75.24	79.20



				UNIT	SCALE	SHEET	TITLE:
				mm		1 of 1	
		DRAWN BY		APPROVED BY		DRAW NO. : A3960WVA-XPR	
		李勤		董正一			
		2006.05.29		2006.05.29		REV. A0	
		GENERAL TOLERANCE					
		X. X±0.25		ANGLE±		REV. A0	
A0	NEW RELEASE	2006.05.29	X. XX±0.15				
REV.	DESCRIPTION	DATE	X. XXX±0.05				