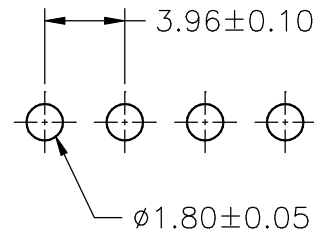
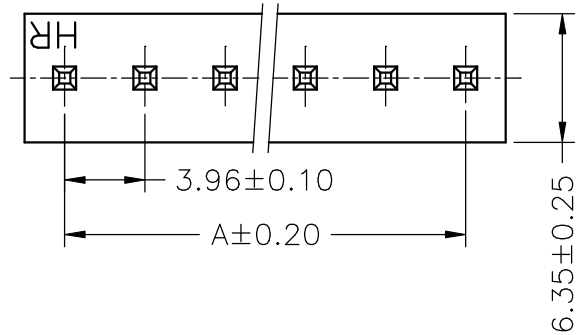


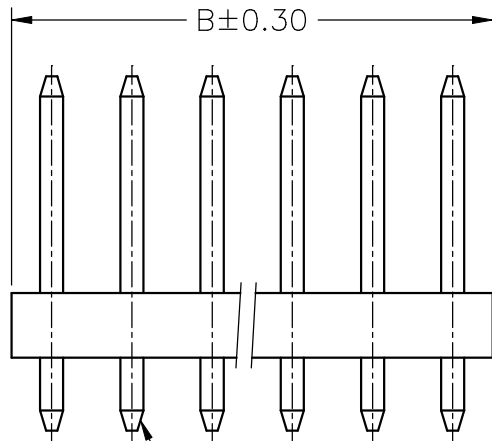
SPECIFICATIONS
 Current Rating: 7A AC,DC
 Voltage Rating: 250V AC,DC
 Temperature Range: -25°C ~ +85°C
 Contact Resistance: 10mΩ Max
 Insulation Resistance: 1000MΩ Min
 Withstanding Voltage: 1500V AC/minute
 Pin Material: Brass/Tin-plated
 Material: Nylon 66,UL94V-2
 Color: Natural(Translucent)

Ordering Information & Dimensions

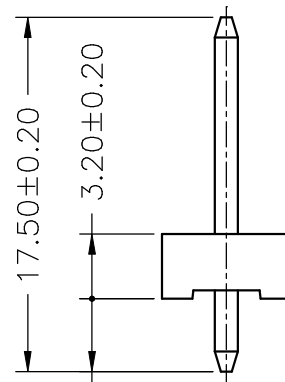
PART NO.	Dimensions	
	A	B
A3960WVA-02P	3.96	7.92
A3960WVA-03P	7.92	11.88
A3960WVA-04P	11.88	15.84
A3960WVA-05P	15.84	19.80
A3960WVA-06P	19.80	23.76
A3960WVA-07P	23.76	27.72
A3960WVA-08P	27.72	31.68
A3960WVA-09P	31.68	35.64
A3960WVA-10P	35.64	39.60
A3960WVA-11P	39.60	43.56
A3960WVA-12P	43.56	47.52
A3960WVA-13P	47.52	51.48
A3960WVA-14P	51.48	55.44
A3960WVA-15P	55.44	59.40
A3960WVA-16P	59.40	63.36
A3960WVA-17P	63.36	67.32
A3960WVA-18P	67.32	71.28
A3960WVA-19P	71.28	75.24
A3960WVA-20P	75.24	79.20



P.C.B LAYOUT



PIN 1.14 SQ



3.60±0.20

				JOINT TECH ELECTRONIC IND. CO., LTD. JOY DAY INDUSTRIAL CO., LTD.	
UNIT	SCALE	SHEET	TITLE:		
mm		1 of 1	3.96mm PITCH 180° WAFER		
DRAWN BY	APPROVED BY				
董正一	董正一				
2002.07.12	2002.07.12				
GENERAL TOLERANCE					
		X. X±0.25	ANGLE±		
B0	NEW RELEASE	2006.05.29	X. XX±0.15	DRAW NO. : A3960WVA-XP	
REV.	DESCRIPTION	DATE	X. XXX±0.05		