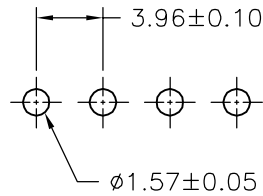
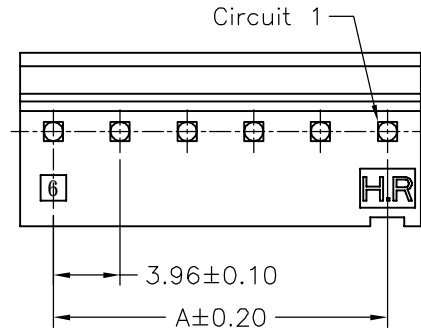
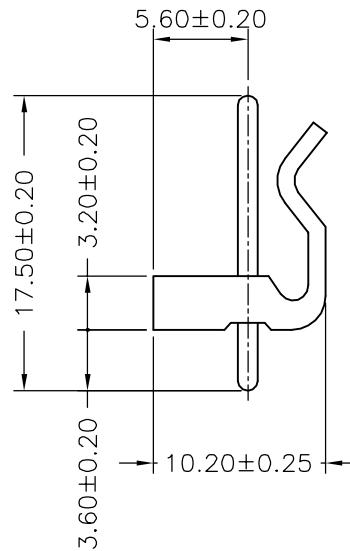
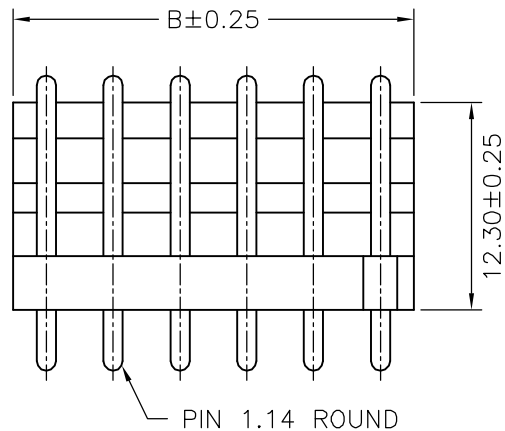


SPECIFICATIONS

Current Rating: 7A AC,DC
 Voltage Rating: 250V AC,DC
 Temperature Range: -25°C ~ +85°C
 Contact Resistance: 10mΩ Max
 Insulation Resistance: 1000MΩ Min
 Withstanding Voltage: 1500V AC/minute
 Pin Material: Brass/Tin-plated
 Material: Nylon 66,UL94V-2
 Color: Natural(Translucent)



P.C.B LAYOUT



Ordering Information & Dimensions

PART NO.	Dimensions	
	A	B
A3960WW-02PR	3.96	7.92
A3960WW-03PR	7.92	11.88
A3960WW-04PR	11.88	15.84
A3960WW-05PR	15.84	19.80
A3960WW-06PR	19.80	23.76
A3960WW-07PR	23.76	27.72
A3960WW-08PR	27.72	31.68
A3960WW-09PR	31.68	35.64
A3960WW-10PR	35.64	39.60
A3960WW-11PR	39.60	43.56
A3960WW-12PR	43.56	47.52
A3960WW-13PR	47.52	51.48
A3960WW-14PR	51.48	55.44
A3960WW-15PR	55.44	59.40
A3960WW-16PR	59.40	63.36
A3960WW-17PR	63.36	67.32
A3960WW-18PR	67.32	71.28
A3960WW-19PR	71.28	75.24
A3960WW-20PR	75.24	79.20

				UNIT SCALE SHEET mm 1 of 1		TITLE: 3.96mm PITCH 180° WAFER, ROUND PIN
				DRAWN BY 李勤 2006.05.29		
		GENERAL TOLERANCE		ANGLE±		DRAW NO.: A3960WW-XPR REV. A1
A1	REVISE	2006.10.31	X. X±0.25			
A0	NEW RELEASE	2006.05.29	X. XX±0.15 X. XXX±0.05			
REV.	DESCRIPTION	DATE				