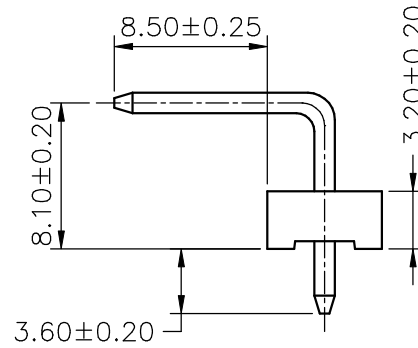
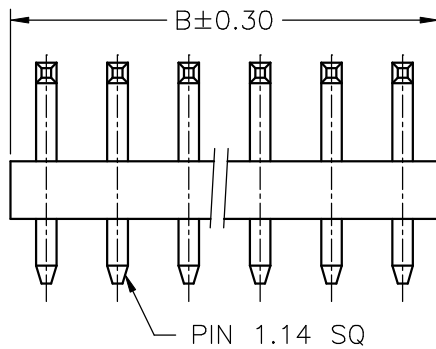
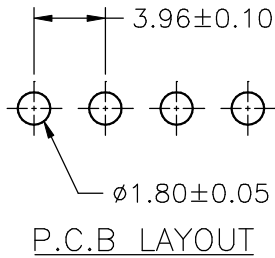
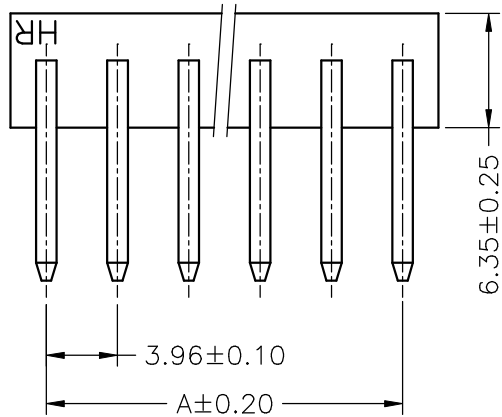


**SPECIFICATIONS**

Current Rating: 7A AC,DC  
 Voltage Rating: 250V AC,DC  
 Temperature Range: -25°C ~ +85°C  
 Contact Resistance: 10mΩ Max  
 Insulation Resistance: 1000MΩ Min  
 Withstanding Voltage: 1500V AC/minute  
 Pin Material: Brass/Tin-plated  
 Material: Nylon 66,UL94V-2  
 Color: Natural(Translucent)

**Ordering Information & Dimensions**

PART NO.	Dimensions	
	A	B
A3960WRA-02P	3.96	7.92
A3960WRA-03P	7.92	11.88
A3960WRA-04P	11.88	15.84
A3960WRA-05P	15.84	19.80
A3960WRA-06P	19.80	23.76
A3960WRA-07P	23.76	27.72
A3960WRA-08P	27.72	31.68
A3960WRA-09P	31.68	35.64
A3960WRA-10P	35.64	39.60
A3960WRA-11P	39.60	43.56
A3960WRA-12P	43.56	47.52
A3960WRA-13P	47.52	51.48
A3960WRA-14P	51.48	55.44
A3960WRA-15P	55.44	59.40
A3960WRA-16P	59.40	63.36
A3960WRA-17P	63.36	67.32
A3960WRA-18P	67.32	71.28
A3960WRA-19P	71.28	75.24
A3960WRA-20P	75.24	79.20



				JOINT TECH ELECTRONIC IND. CO., LTD. JOY DAY INDUSTRIAL CO., LTD.		
UNIT	SCALE	SHEET	TITLE:			
mm		1 of 1	<b>3.96mm PITCH 90° WAFER</b>			
DRAWN BY		APPROVED BY				
董正一		董正一				
2002.07.12		2002.07.12				
GENERAL TOLERANCE						
		X. X±0.25	ANGLE±			
B0	NEW RELEASE	2006.05.29	X. XX±0.15	DRAW NO. : A3960WRA-XP		
REV.	DESCRIPTION	DATE	X. XXX±0.05			REV. B0