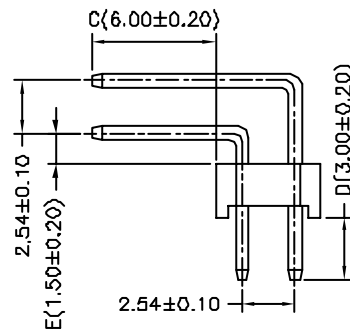
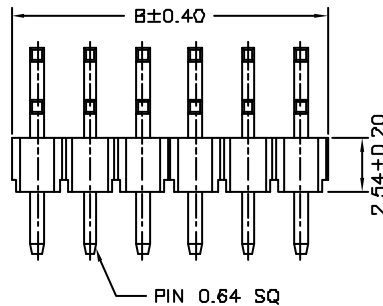
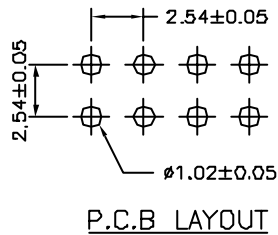
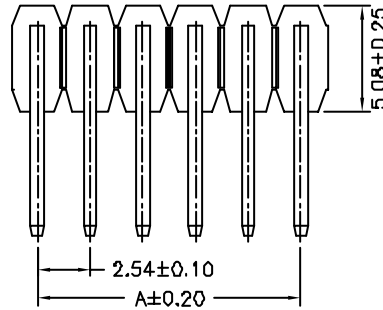


Ordering Information & Dimensions

PART NO.	Dimensions		PART NO.	Dimensions		PART NO.	Dimensions	
	A	B		A	B		A	B
A2546WRA-2X02P	2.54	5.08	A2546WRA-2X15P	35.56	38.10	A2546WRA-2X28P	68.58	71.12
A2546WRA-2X03P	5.08	7.62	A2546WRA-2X16P	38.10	40.64	A2546WRA-2X29P	71.12	73.66
A2546WRA-2X04P	7.62	10.16	A2546WRA-2X17P	40.64	43.18	A2546WRA-2X30P	73.66	76.20
A2546WRA-2X05P	10.16	12.70	A2546WRA-2X18P	43.18	45.72	A2546WRA-2X31P	76.20	78.74
A2546WRA-2X06P	12.70	15.24	A2546WRA-2X19P	45.72	48.26	A2546WRA-2X32P	78.74	81.28
A2546WRA-2X07P	15.24	17.78	A2546WRA-2X20P	48.26	50.80	A2546WRA-2X33P	81.28	83.82
A2546WRA-2X08P	17.78	20.32	A2546WRA-2X21P	50.80	53.34	A2546WRA-2X34P	83.82	86.36
A2546WRA-2X09P	20.32	22.86	A2546WRA-2X22P	53.34	55.88	A2546WRA-2X35P	86.36	88.90
A2546WRA-2X10P	22.86	25.40	A2546WRA-2X23P	55.88	58.42	A2546WRA-2X36P	88.90	91.44
A2546WRA-2X11P	25.40	27.94	A2546WRA-2X24P	58.42	60.96	A2546WRA-2X37P	91.44	93.98
A2546WRA-2X12P	27.94	30.48	A2546WRA-2X25P	60.96	63.50	A2546WRA-2X38P	93.98	96.52
A2546WRA-2X13P	30.48	33.02	A2546WRA-2X26P	63.50	66.04	A2546WRA-2X39P	96.52	99.06
A2546WRA-2X14P	33.02	35.56	A2546WRA-2X27P	66.04	68.58	A2546WRA-2X40P	99.06	101.60



Optional Dim. available but MOQ requested

SPECIFICATIONS

Current Rating: 3A AC,DC
 Voltage Rating: 250V AC,DC
 Temperature Range: -25°C ~ +85°C
 Contact Resistance: 20mΩ Max
 Insulation Resistance: 1000MΩ Min
 Withstanding Voltage: 1500V AC/minute
 Pin Material: Brass/Gold-flash
 Material: PBT30%GF,UL94V-0
 Color: Natural(Black)

				JOINT TECH ELECTRONIC IND. CO., LTD. JOY DAY INDUSTRIAL CO., LTD.	
		UNIT	SCALE	SHEET	TITLE:
		mm		1 of 1	2.54mm PITCH 90° DUAL ROW PIN HEADER
		DRAWN BY	APPROVED BY		
		董正一 2003.06.24	董正一 2003.06.24		
GENERAL TOLERANCE					
B1	REVISE	2006.09.02	X.X ±0.25	ANGLE ±	
B0	NEW RELEASE	2006.02.20	X.XX ±0.15		
REV.	DESCRIPTION	DATE	X.XXX ±0.05		
				DRAW NO.:	REV.
				A2546WRA-2XNP	B1