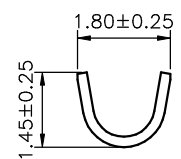


SEC:A-A



SEC:B-B

Ordering Information & Specifications

Part No	Wire Range	Insulation O.D.	Material	Finish	Qty/reel
A2502-TPE	AWG#22-#30	1.90mm(max)	Phosphor Bronze	Tin-plated	10,000pcs
A2502-GPE	AWG#22-#30	1.90mm(max)	Phosphor Bronze	Gold-flash	
A2502-HPE	AWG#22-#30	1.90mm(max)	Phosphor Bronze	Gold-flash	

Note:E-Stamping before Tin-plated or Gold-flash

				JOINT TECH ELECTRONIC IND. CO., LTD. JOY DAY INDUSTRIAL CO., LTD.			
UNIT	SCALE	SHEET	TITLE:				
mm		1 of 1	2.50mm PITCH CRIMP TERMINAL				
DRAWN BY		APPROVED BY				DRAW NO. :	
董正一		董正一					REV. B0
2001.02.01		2001.02.01					
GENERAL TOLERANCE							
	X. X±0.25	ANGLE±		REV. B0			
B0	NEW RELEASE	2006.05.14	X. XX±0.15				
REV.	DESCRIPTION	DATE	X. XXX±0.05	A2502-XX			