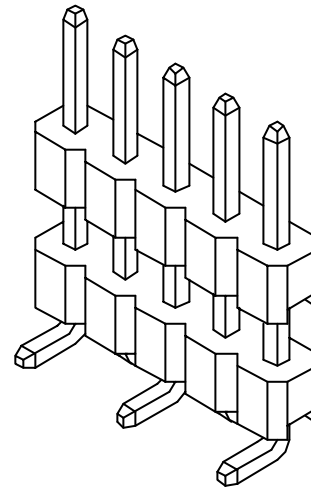
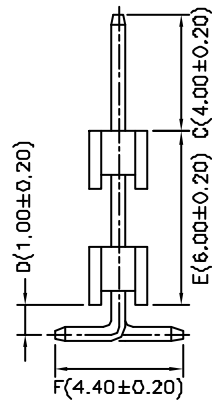
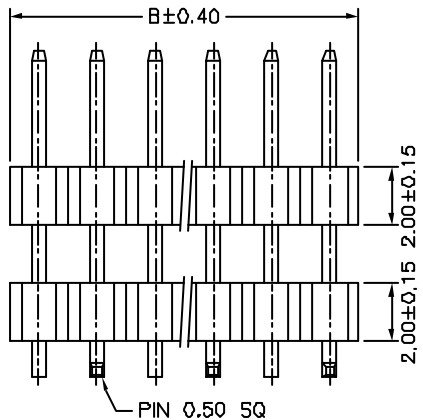
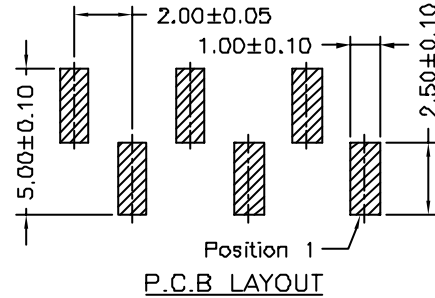
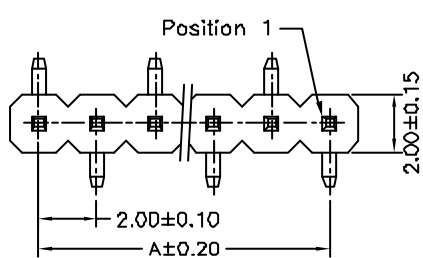


Ordering Information & Dimensions

PART NO.	Dimensions		PART NO.	Dimensions		PART NO.	Dimensions	
	A	B		A	B		A	B
A2015WVA-S-02P	2.00	4.00	A2015WVA-S-15P	28.00	30.00	A2015WVA-S-28P	54.00	56.00
A2015WVA-S-03P	4.00	6.00	A2015WVA-S-16P	30.00	32.00	A2015WVA-S-29P	56.00	58.00
A2015WVA-S-04P	6.00	8.00	A2015WVA-S-17P	32.00	34.00	A2015WVA-S-30P	58.00	60.00
A2015WVA-S-05P	8.00	10.00	A2015WVA-S-18P	34.00	36.00	A2015WVA-S-31P	60.00	62.00
A2015WVA-S-06P	10.00	12.00	A2015WVA-S-19P	36.00	38.00	A2015WVA-S-32P	62.00	64.00
A2015WVA-S-07P	12.00	14.00	A2015WVA-S-20P	38.00	40.00	A2015WVA-S-33P	64.00	66.00
A2015WVA-S-08P	14.00	16.00	A2015WVA-S-21P	40.00	42.00	A2015WVA-S-34P	66.00	68.00
A2015WVA-S-09P	16.00	18.00	A2015WVA-S-22P	42.00	44.00	A2015WVA-S-35P	68.00	70.00
A2015WVA-S-10P	18.00	20.00	A2015WVA-S-23P	44.00	46.00	A2015WVA-S-36P	70.00	72.00
A2015WVA-S-11P	20.00	22.00	A2015WVA-S-24P	46.00	48.00	A2015WVA-S-37P	72.00	74.00
A2015WVA-S-12P	22.00	24.00	A2015WVA-S-25P	48.00	50.00	A2015WVA-S-38P	74.00	76.00
A2015WVA-S-13P	24.00	26.00	A2015WVA-S-26P	50.00	52.00	A2015WVA-S-39P	76.00	78.00
A2015WVA-S-14P	26.00	28.00	A2015WVA-S-27P	52.00	54.00	A2015WVA-S-40P	78.00	80.00

*Optional Dim. available but
MOQ requested*



SPECIFICATIONS

Current Rating: 2A AC,DC
Voltage Rating: 250V AC,DC
Temperature Range: -25°C ~ +85°C
Contact Resistance: 20mΩ Max.
Insulation Resistance: 1000MΩ Min.
Withstanding Voltage: 1000V AC/minute
Pin Material: Brass/Gold-flash
Material: Nylon 6T,UL94V-0
Color: Natural(Black)

				JOINT TECH ELECTRONIC IND. CO., LTD. JOY DAY INDUSTRIAL CO., LTD.	
		UNIT	SCALE	SHEET	TITLE:
		mm		1 of 1	2.00mm PITCH 180 SINGLE ROW PIN HEADER-SMT TYPE
		DRAWN BY	APPROVED BY		
		董正一 2005.04.21	董正一 2005.04.21		
		GENERAL TOLERANCE			
B1	REVISE	2006.08.30	X.X ±0.25	ANGLE ±	
B0	NEW RELEASE	2005.11.30	X.XX ±0.15		
REV.	DESCRIPTION	DATE	X.XXX ±0.05		
		DRAW NO.:			REV.
		A2015WVA-S-XP			B1