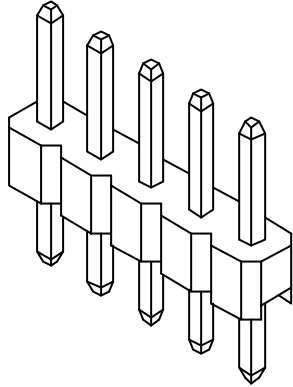
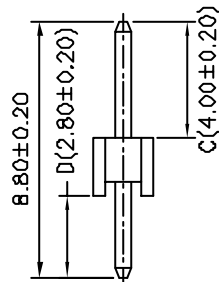
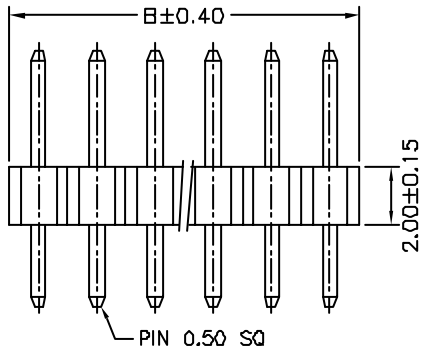
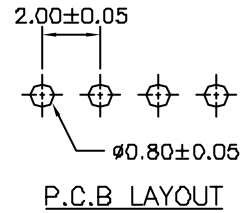
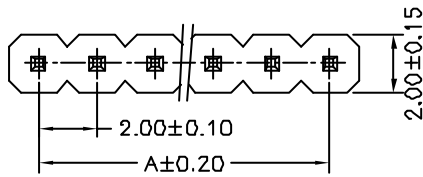


Ordering Information & Dimensions





PART NO.	Dimensions		PART NO.	Dimensions		PART NO.	Dimensions	
	A	B		A	B		A	B
A2015WV-02P	2.00	4.00	A2015WV-15P	28.00	30.00	A2015WV-28P	54.00	56.00
A2015WV-03P	4.00	6.00	A2015WV-16P	30.00	32.00	A2015WV-29P	56.00	58.00
A2015WV-04P	6.00	8.00	A2015WV-17P	32.00	34.00	A2015WV-30P	58.00	60.00
A2015WV-05P	8.00	10.00	A2015WV-18P	34.00	36.00	A2015WV-31P	60.00	62.00
A2015WV-06P	10.00	12.00	A2015WV-19P	36.00	38.00	A2015WV-32P	62.00	64.00
A2015WV-07P	12.00	14.00	A2015WV-20P	38.00	40.00	A2015WV-33P	64.00	66.00
A2015WV-08P	14.00	16.00	A2015WV-21P	40.00	42.00	A2015WV-34P	66.00	68.00
A2015WV-09P	16.00	18.00	A2015WV-22P	42.00	44.00	A2015WV-35P	68.00	70.00
A2015WV-10P	18.00	20.00	A2015WV-23P	44.00	46.00	A2015WV-36P	70.00	72.00
A2015WV-11P	20.00	22.00	A2015WV-24P	46.00	48.00	A2015WV-37P	72.00	74.00
A2015WV-12P	22.00	24.00	A2015WV-25P	48.00	50.00	A2015WV-38P	74.00	76.00
A2015WV-13P	24.00	26.00	A2015WV-26P	50.00	52.00	A2015WV-39P	76.00	78.00
A2015WV-14P	26.00	28.00	A2015WV-27P	52.00	54.00	A2015WV-40P	78.00	80.00



\*Optional Dim. available but  
MOQ requested\*

SPECIFICATIONS

Current Rating: 2A AC,DC  
 Voltage Rating: 250V AC,DC  
 Temperature Range: -25°C ~ +85°C  
 Contact Resistance: 20mΩ Max.  
 Insulation Resistance: 1000MΩ Min.  
 Withstanding Voltage: 1000V AC/minute  
 Pin Material: Brass/Gold-flash  
 Material: PBT30%GF,UL94V-0  
 Color: Natural(Black)

				JOINT TECH ELECTRONIC IND. CO., LTD. JOY DAY INDUSTRIAL CO., LTD.	
UNIT	SCALE	SHEET	TITLE:		
mm		1 of 1	2.00mm PITCH 180 SINGLE ROW PIN HEADER		
DRAWN BY	APPROVED BY				
董正一 2001.02.01	董正一 2001.02.01				
GENERAL TOLERANCE					
B1	REVISE	2006.08.30	X.X ±0.25	ANGLE ±	
B0	NEW RELEASE	2005.11.30	X.XX ±0.15		
REV.	DESCRIPTION	DATE	X.XXX ±0.05		
DRAW NO.:			A2015WV-XP		REV. B1