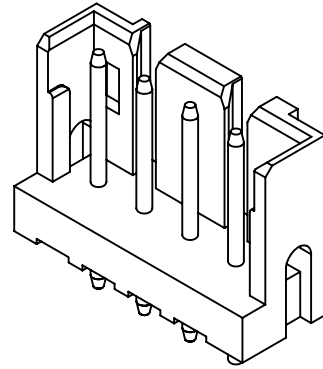


P.C.B. LAYOUT

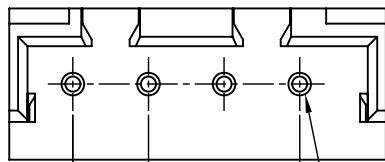
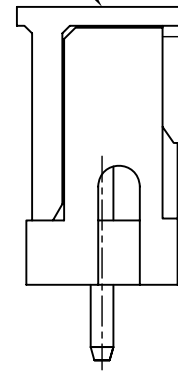


Ordering code

A2013 WVA-04P XXX  
① ② ③ ④

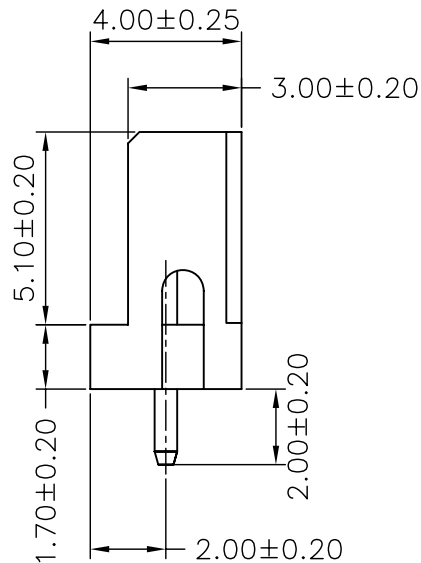
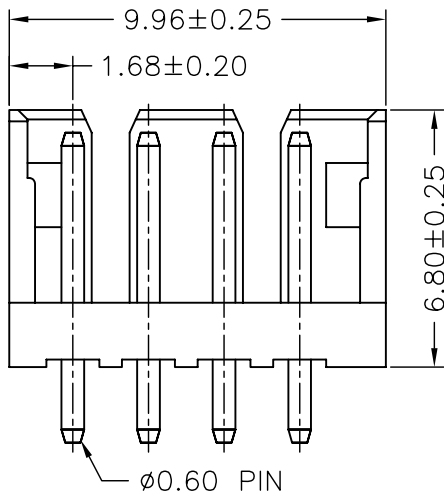
- ① Series No.
- ② Connector type: WVA=Vertical A Type
- ③ No. of circuits
- ④ Option code:  
Blank=Standard


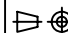
CAP  
(FOR PICK AND  
PLACE SYSTEMS)

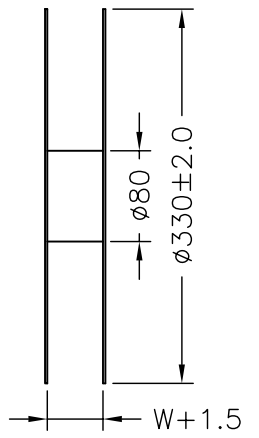
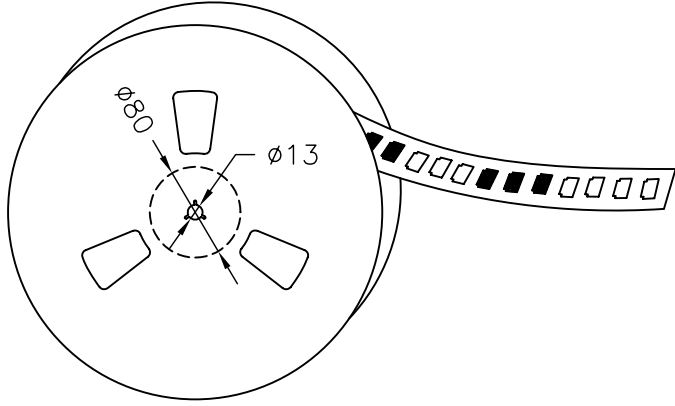
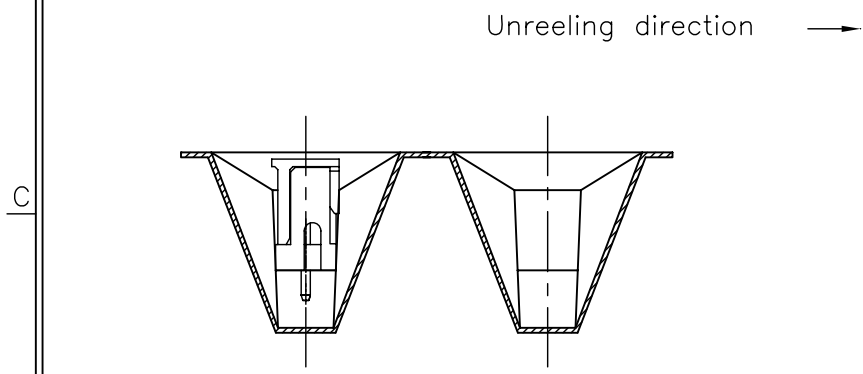
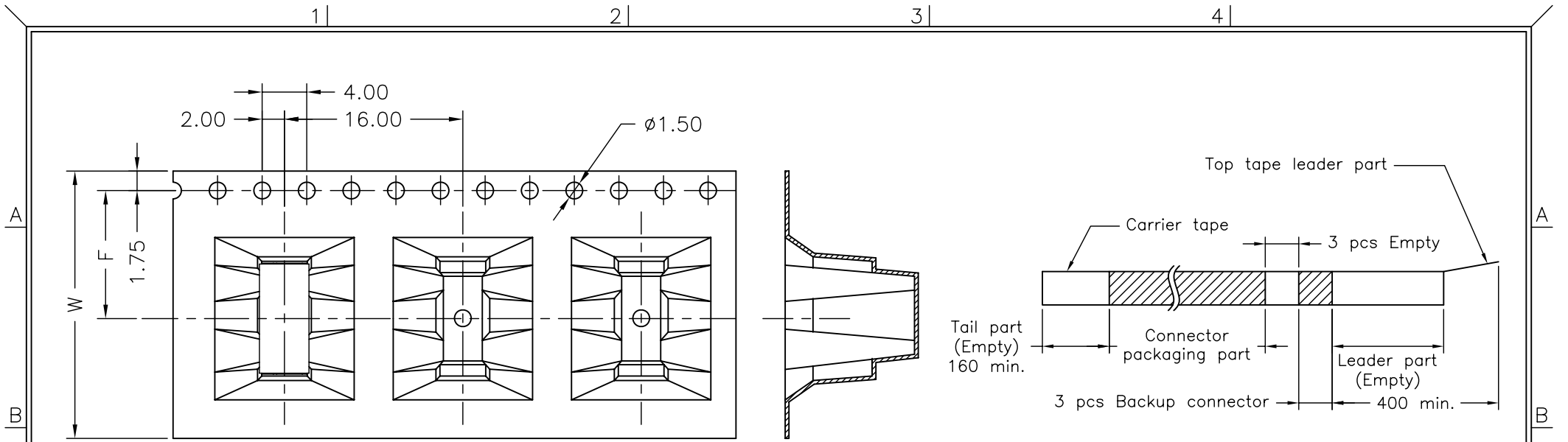


2.00±0.10  
6.00±0.20  
Circuit 1

**SPECIFICATIONS**  
 Current Rating: 4A AC,DC  
 Voltage Rating: 125V AC,DC  
 Temperature Range: -25°C ~ +85°C  
 Contact Resistance: 10mΩ Max.  
 Insulation Resistance: 1000MΩ Min.  
 Withstanding Voltage: 1000V AC/minute  
 Pin Material: Brass/Tin-plated  
 Material: Nylon 46,UL94V-0  
 Cap: Nylon 46,UL94V-0,Natural(Beige)  
 Color: Natural(Beige)



 燦達電子工業股份有限公司 JOINT TECH ELECTRONIC IND. CO., LTD.						UNIT		SCALE	SHEET	TITLE:
						mm			1 of 2	
DRAWN BY		APPROVED BY		P/N: A2013WVA-04P 2.00mm PITCH 180° WAFER						
李勤		董正一								
2006.05.24		2006.05.24		DRAW NO.: A2013WVA-04P						
GENERAL TOLERANCE						REV. NO.: A1				
A1	EN1003290141	2010.03.29	X.X±0.25	ANGLE±						
A0	NEW RELEASE	2006.05.24	X.XX±0.15							
REV.	DESCRIPTION	DATE	X.XXX±0.05							



Number of Contacts	W±0.3	F±0.1	S±0.1	Q'ty/Reel
04P	24	11.50		300

UNIT				SCALE		SHEET		TITLE:	
mm						2 of 2		2.00mm PITCH 180° WAFER TAPING SPEC.	
DRAWN BY			APPROVED BY			DRAW NO. : A2013WVA-04P			
李勤			董正一						
2006.05.24			2006.05.24						
REV.		DESCRIPTION		DATE		GENERAL TOLERANCE		REV.	
A2		EN1003290141		2010.03.29		GENERAL TOLERANCE		A2	
A1		REVISE		2006.06.27		X.X±0.25		ANGLE±	
A0		NEW RELEASE		2006.05.24		X.XX±0.15			
REV.		DESCRIPTION		DATE		X.XXX±0.05			



燦達電子工業股份有限公司  
JOINT TECH ELECTRONIC IND. CO., LTD.

