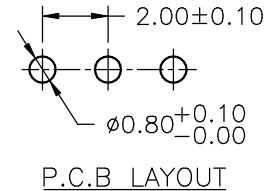
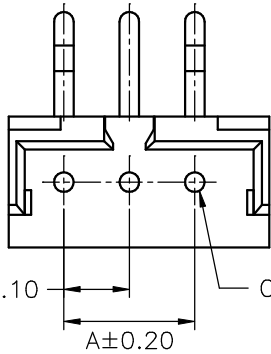
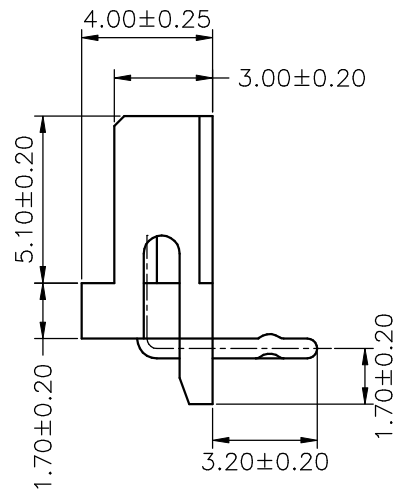
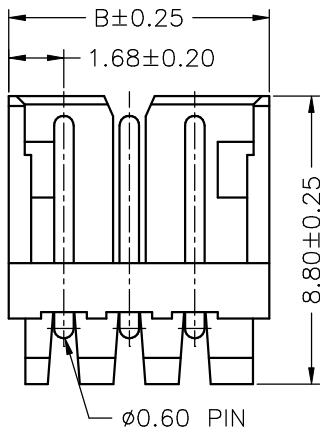


SPECIFICATIONS
 Current Rating: 4A AC,DC
 Voltage Rating: 125V AC,DC
 Temperature Range: -25°C ~ +85°C
 Contact Resistance: 10mΩ Max.
 Insulation Resistance: 1000MΩ Min.
 Withstanding Voltage: 1000V AC/minute
 Pin Material: Brass/Tin-plated 100~150u"
 Material: Nylon 66,UL94V-0
 Color: Natural(White)



2.00±0.10
 A±0.20
 Circuit 1



Ordering Information & Dimensions

PART NO.	Dimensions	
	A	B
A2013WR-02P	2.00	5.96
A2013WR-03P	4.00	7.96
A2013WR-04P	6.00	9.96
A2013WR-05P	8.00	11.96
A2013WR-06P	10.00	13.96
A2013WR-07P	12.00	15.96
A2013WR-08P	14.00	17.96
A2013WR-09P	16.00	19.96
A2013WR-10P	18.00	21.96
A2013WR-11P	20.00	23.96
A2013WR-12P	22.00	25.96
A2013WR-13P	24.00	27.96
A2013WR-14P	26.00	29.96
A2013WR-15P	28.00	31.96

UNIT	SCALE	SHEET	TITLE:	
mm		1 of 1	2.00mm PITCH 90° WAFER	
DRAWN BY	APPROVED BY			
董正一	董正一		DRAW NO. : A2013WR-XP	
2001.02.01	2001.02.01			
GENERAL TOLERANCE			REV. B1	
B1	REVISE	2006.05.24		
B0	NEW RELEASE	2006.01.07	X.XX±0.15	
REV.	DESCRIPTION	DATE	X.XXX±0.05	