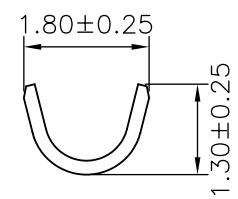
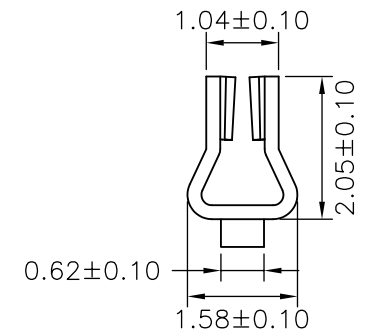


SEC:A-A



SEC:B-B



SEC:C-C

Ordering Information & Specifications

Part No	Wire Range	Insulation O.D.	Material	Finish	Qty/reel
A2005-TPE	AWG#22-#28	1.45mm(max)	Phosphor Bronze	Tin-plated	10,000pcs
A2005-GPE	AWG#22-#28	1.45mm(max)	Phosphor Bronze	Gold-flash	10,000pcs

Note:E-Stamping before Tin-plated or Gold-flash

UNIT		SCALE	SHEET		<b>TITLE:</b>  <b>2.00mm PITCH</b> <b>CRIMP TERMINAL</b>
mm			1 of 1		
DRAWN BY		APPROVED BY			
董正一		董正一			
2005.04.16		2005.04.16			
GENERAL TOLERANCE			ANGLE±		
B2	REVISE	2008.06.04	X.X±0.25		
B1	REVISE	2006.12.12	X.XX±0.15		
B0	NEW RELEASE	2005.11.24	X.XXX±0.05		
REV.	DESCRIPTION	DATE			
DRAW NO. : A2005-XX					REV. B2