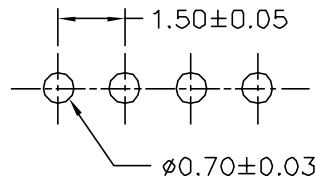
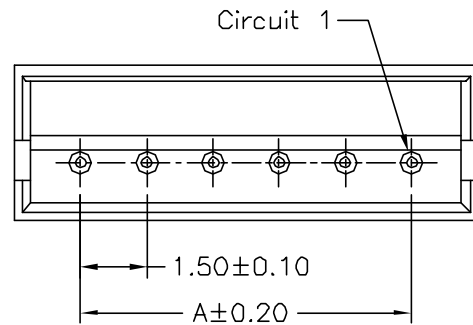


SPECIFICATIONS

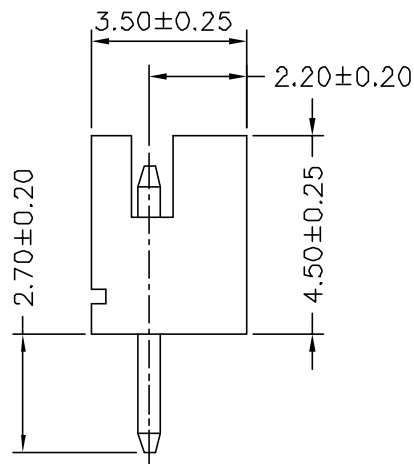
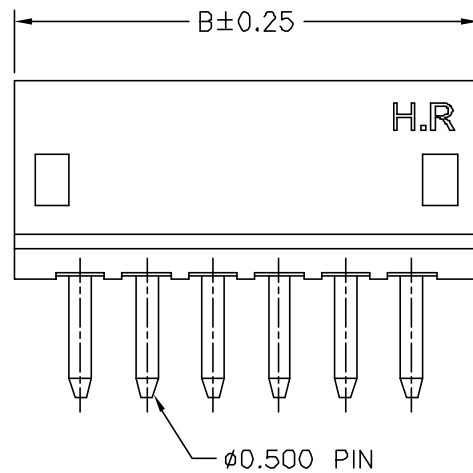
Current Rating: 1A AC,DC
 Voltage Rating: 100V AC,DC
 Temperature Range: -25°C ~ +85°C
 Contact Resistance: 20mΩ Max.
 Insulation Resistance: 500MΩ Min.
 Withstanding Voltage: 500V AC/minute
 Pin Material: Brass/Tin-plated
 Material: Nylon 66,UL94V-0
 Pantone Color: 7528C


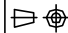
Ordering Information & Dimensions

PART NO.	Dimensions	
	A	B
A1500WV-02P2	1.50	4.50
A1500WV-03P2	3.00	6.00
A1500WV-04P2	4.50	7.50
A1500WV-05P2	6.00	9.00
A1500WV-06P2	7.50	10.50
A1500WV-07P2	9.00	12.00
A1500WV-08P2	10.50	13.50
A1500WV-09P2	12.00	15.00
A1500WV-10P2	13.50	16.50
A1500WV-11P2	15.00	18.00
A1500WV-12P2	16.50	19.50
A1500WV-13P2	18.00	21.00
A1500WV-15P2	21.00	24.00



P.C.B LAYOUT



			 JOINT TECH ELECTRONIC IND. CO., LTD. JOY DAY INDUSTRIAL CO., LTD.		
		UNIT	SCALE	SHEET	
		mm		1 of 1	
		DRAWN BY		APPROVED BY	
		朱恆秀		謝瑞清	
		2008.01.14		2008.01.14	
GENERAL TOLERANCE					
		X.X ±0.25	ANGLE ±		
A0	NEW RELEASE	2008.01.14			TITLE: 1.50mm PITCH 180 WAFER
REV.	DESCRIPTION	DATE			