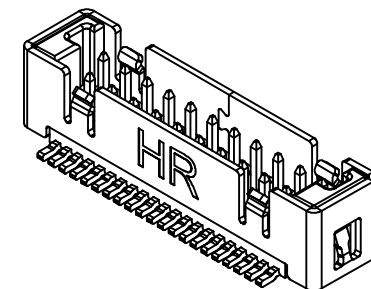
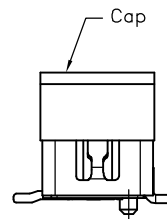
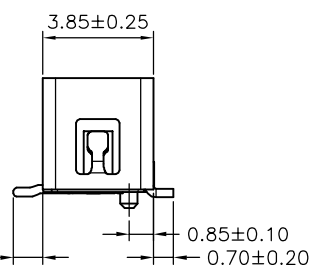


SUGGESTED PCB LAYOUT
(COMPONENT SIDE)



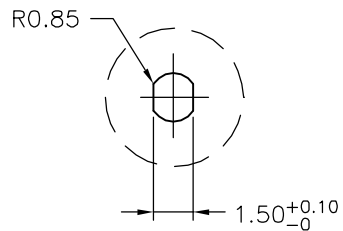
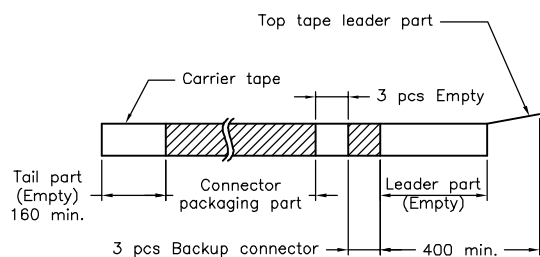
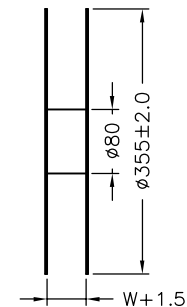
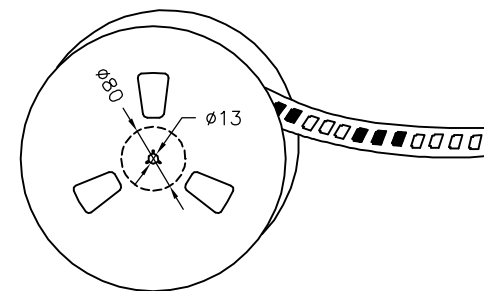
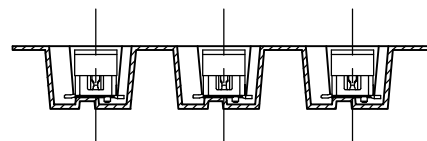
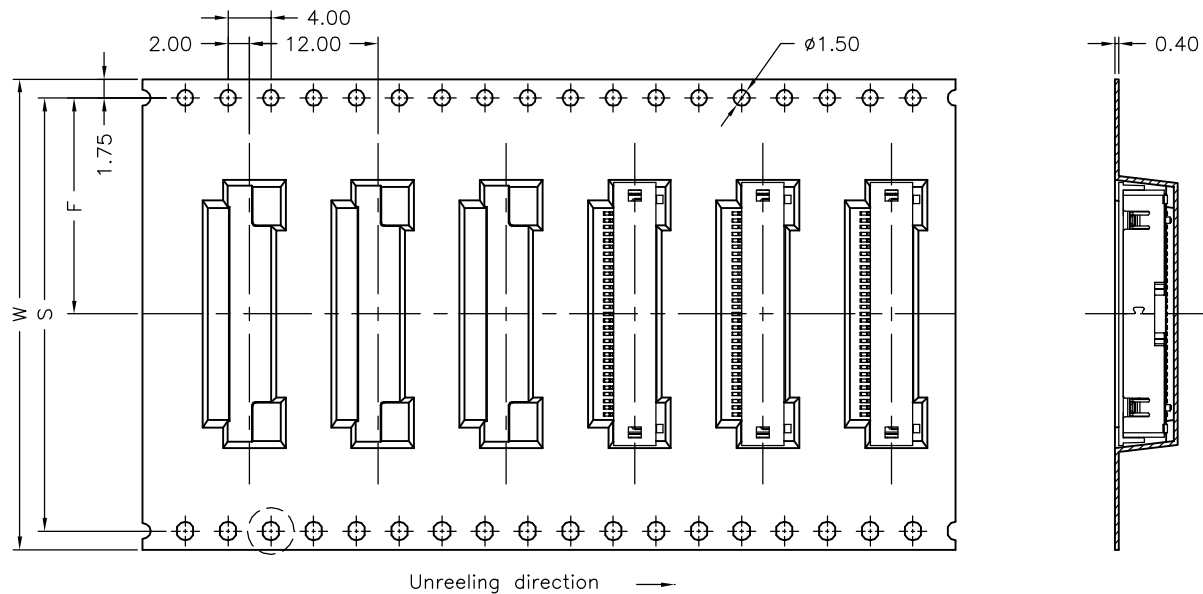
SPECIFICATIONS

Current Rating: 1A AC,DC
 Voltage Rating: 200V AC,DC
 Temperature Range: -25°C ~ +85°C
 Contact Resistance: 40mΩ Max.
 Insulation Resistance: 100MΩ Min.
 Withstanding Voltage: 500V AC/minute
 Pin Material: Phosphor Bronze/Gold-plated 3u"
 Shell: Phosphor Bronze/Tin-plated
 Cap: Nylon 6T,UL94V-0,Natural(Black)
 Material: Nylon 6T,UL94V-0
 Color: Natural(Black)

Ordering Information & Dimensions

PART NO.	Dimensions		
	A	B	C
A1256WV-SF-21P	12.50	16.85	11.25
A1256WV-SF-31P	18.75	23.10	17.50

		JOINT TECH ELECTRONIC IND. CO., LTD. JOY DAY INDUSTRIAL CO., LTD.	
		UNIT	SCALE
		mm	1 of 2
		DRAWN BY	APPROVED BY
		董正一	董正一
		2005.10.11	2005.10.11
		GENERAL TOLERANCE	
B2	REVISE	2007.11.06	
B1	REVISE	2007.09.07	X.X±0.25
B0	NEW RELEASE	2006.05.06	X.XX±0.15
REV.	DESCRIPTION	DATE	X.XXX±0.05
		ANGLE±	
			TITLE:
			1.25mm PITCH
			180° DUAL ROW WAFER-
			SMT TYPE, SHELL, WITH BOSS
DRAW NO.:			REV.
A1256WV-SF-XP			B2



Number of Contacts	W±0.3	F±0.1	S±0.1	Q'ty/Reel
21P	32	14.20	28.40	1,000
31P	44	20.20	40.40	1,000

			UNIT	SCALE
			mm	2 of 2
			DRAWN BY	APPROVED BY
			歐陽小強	謝瑞清
			2007.08.09	2007.08.09
A2	REVISE	2007.11.05	GENERAL TOLERANCE	
A1	REVISE	2007.09.07	X.X±0.25	ANGLE±
A0	NEW RELEASE	2007.08.09	X.XX±0.15	
REV.	DESCRIPTION	DATE	X.XXX±0.05	
			TITLE:	
			1.25mm PITCH 180° DUAL ROW WAFER- SMT TYPE, SHELL, WITH BOSS, TAPING SPEC.	
			DRAW NO.:	REV.
			A1256WV-SF-XP	A2