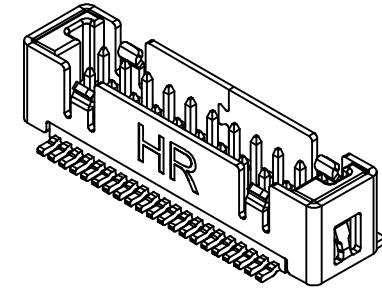
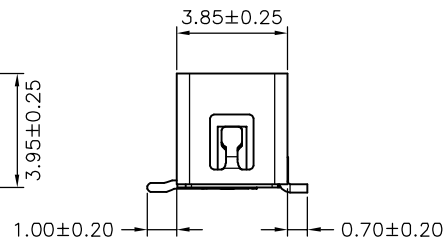
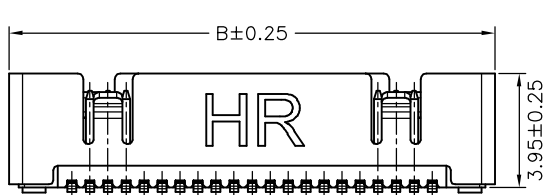


SUGGESTED PCB LAYOUT
(COMPONENT SIDE)



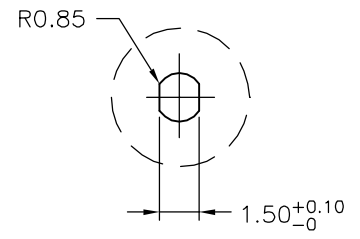
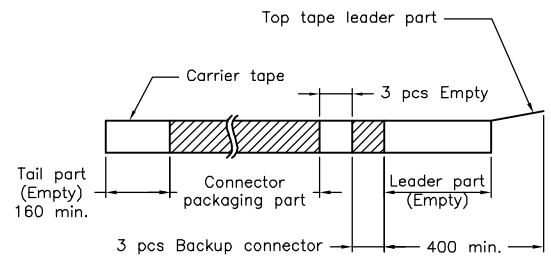
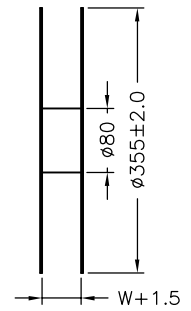
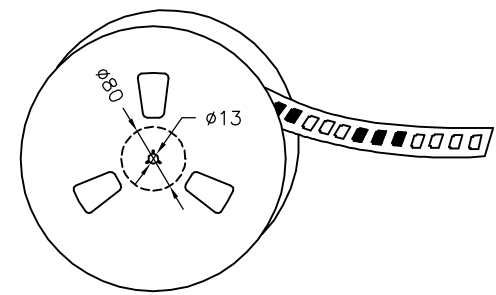
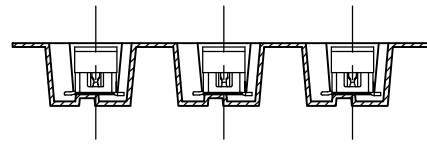
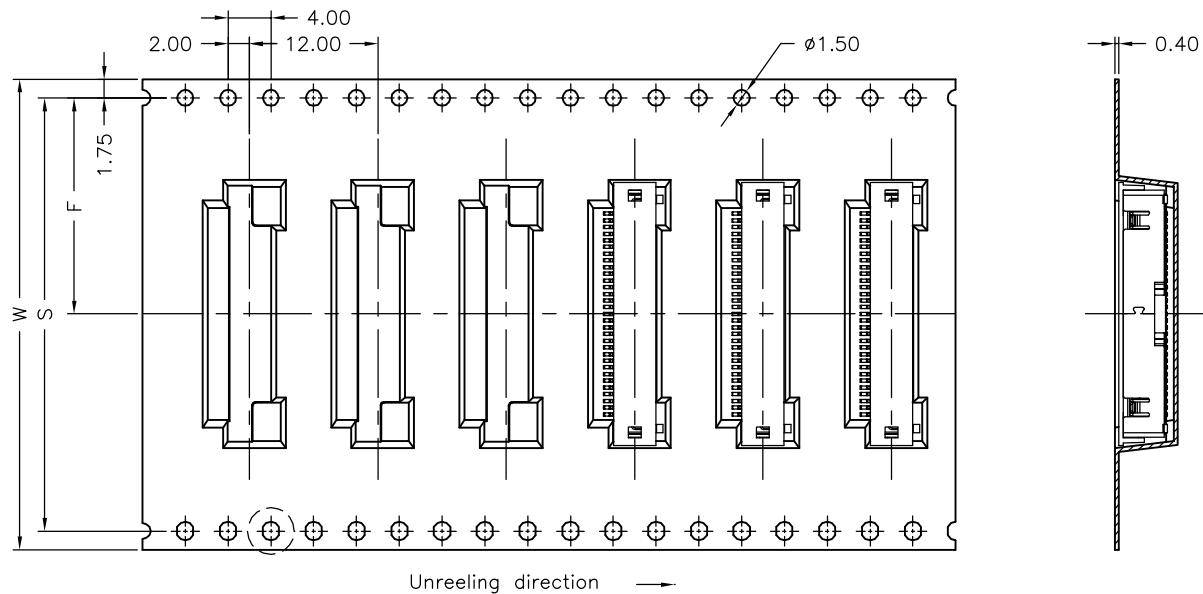
SPECIFICATIONS

Current Rating: 1A AC,DC
 Voltage Rating: 200V AC,DC
 Temperature Range: -25°C ~ +85°C
 Contact Resistance: 40mΩ Max.
 Insulation Resistance: 100MΩ Min.
 Withstanding Voltage: 500V AC/minute
 Pin Material: Phosphor Bronze/Gold-plated 3u"
 Shell: Phosphor Bronze/Tin-plated
 Cap: Nylon 6T,UL94V-0,Natural(Black)
 Material: Nylon 6T,UL94V-0
 Color: Natural(Black)

Ordering Information & Dimensions

PART NO.	Dimensions	
	A	B
A1256WV-S-21P	12.50	16.85
A1256WV-S-31P	18.75	23.10

			UNIT	SCALE	SHEET	TITLE:
			mm		1 of 2	
			DRAWN BY	APPROVED BY		1.25mm PITCH 180° DUAL ROW WAFER- SMT TYPE, SHELL, W/O BOSS
			董正一 2005.10.11	董正一 2005.10.11		
			GENERAL TOLERANCE			DRAW NO. : A1256WV-S-XP
B2	REVISE	2007.11.06	X.X±0.25	ANGLE±		
B1	REVISE	2007.09.07	X.XX±0.15			
B0	NEW RELEASE	2006.05.06	X.XXX±0.05			
REV.	DESCRIPTION	DATE				REV. B2



Number of Contacts	W±0.3	F±0.1	S±0.1	Q'ty/Reel
21P	32	14.20	28.40	1,000
31P	44	20.20	40.40	1,000

			UNIT	SCALE
			mm	2 of 2
			DRAWN BY	APPROVED BY
			歐陽小強	謝瑞清
			2007.08.09	2007.08.09
A2	REVISE	2007.11.05	GENERAL TOLERANCE	
A1	REVISE	2007.09.07	X.X±0.25	ANGLE±
A0	NEW RELEASE	2007.08.09	X.XX±0.15	
REV.	DESCRIPTION	DATE	X.XXX±0.05	
TITLE: 1.25mm PITCH 180° DUAL ROW WAFER-SMT TYPE, SHELL, W/O BOSS, TAPING SPEC.				
DRAW NO. : A1256WV-S-XP				REV. A2