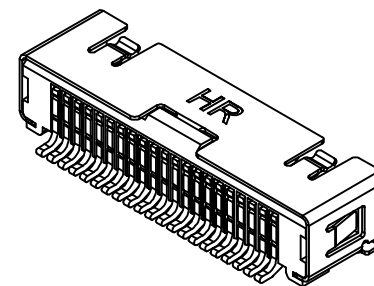
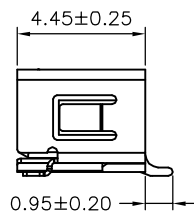
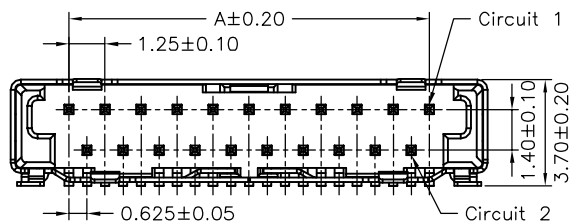


SUGGESTED PCB LAYOUT
(COMPONENT SIDE)



SPECIFICATIONS

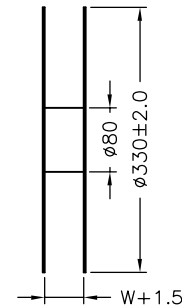
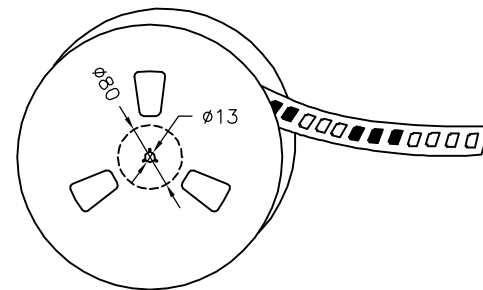
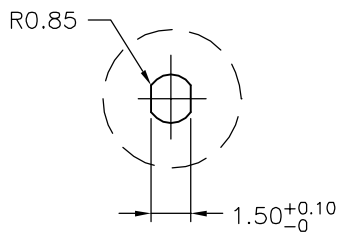
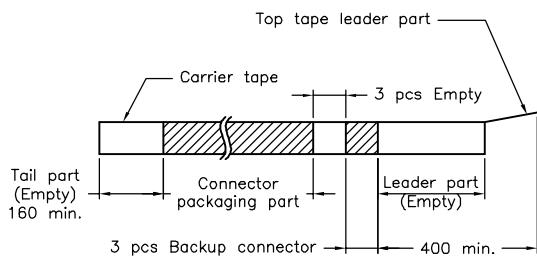
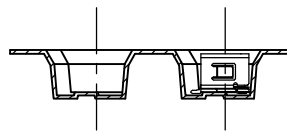
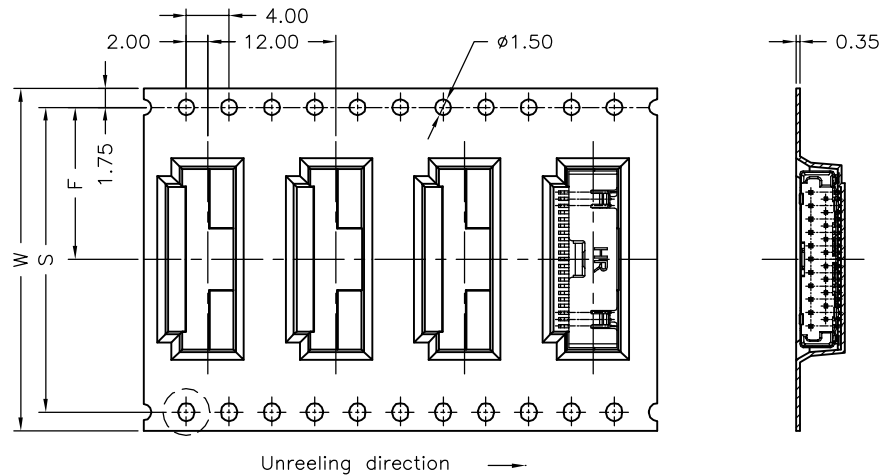
Current Rating: 1A AC,DC
 Voltage Rating: 200V AC,DC
 Temperature Range: -25°C ~ +85°C
 Contact Resistance: 40mΩ Max.
 Insulation Resistance: 100MΩ Min.
 Withstanding Voltage: 500V AC/minute
 Pin Material: Phosphor Bronze/Gold-plated 3u"
 Shell: Phosphor Bronze/Tin-plated
 Material: Nylon 6T,UL94V-0
 Color: Natural(Black)



Ordering Information & Dimensions

PART NO.	Dimensions	
	A	B
A1256WR-S-21P	12.50	16.55
A1256WR-S-31P	18.75	22.80
A1256WR-S-41P	25.00	29.05

UNIT	SCALE	SHEET	TITLE:				
mm		1 of 2	1.25mm PITCH 90° DUAL ROW WAFER-SMT TYPE, SHELL				
DRAWN BY	APPROVED BY					DRAW NO.:	
董正一 2005.10.11	董正一 2005.10.11					A1256WR-S-XP	
GENERAL TOLERANCE						REV. BO	
BO	NEW RELEASE	2006.05.06	X.X±0.25	ANGLE±			
REV.	DESCRIPTION	DATE	X.XX±0.15				
			X.XXX±0.05				



Number of Contacts	W±0.3	F±0.1	S±0.1	Q'ty/Reel
21P	32	14.20	28.40	1,000
31P	44	20.20	40.40	1,000
41P	44	20.20	40.40	1,000

UNIT	SCALE	SHEET	TITLE:
mm		2 of 2	1.25mm PITCH 90° DUAL ROW WAFER- SMT TYPE, SHELL, TAPING SPEC.
DRAWN BY		APPROVED BY	
歐陽小強		謝瑞清	
2007.08.09		2007.08.09	
GENERAL TOLERANCE			
X. X±0.25		ANGLE±	
X. XX±0.15			
X. XXX±0.05			
A0	NEW RELEASE	2007.08.09	DRAW NO. :
REV.	DESCRIPTION	DATE	A1256WR-S-XP
			REV. A0