

SPECIFICATIONS

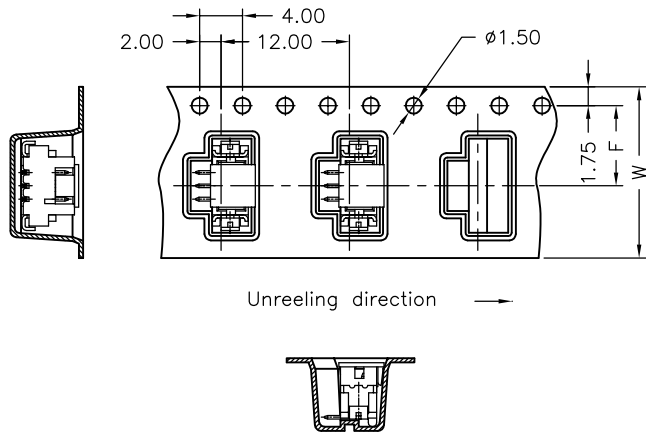
Current Rating: 1A AC,DC
 Voltage Rating: 150V AC,DC
 Temperature Range: -25°C ~ +85°C
 Contact Resistance: 30mΩ Max.
 Insulation Resistance: 500MΩ Min.
 Withstanding Voltage: 500V AC/minute
 Pin Material: Brass/Gold-flash
 Solder Tabs: Phosphor Bronze/Gold-flash
 Cap: Nylon 6T,UL94V-0,Natural(Beige)
 Wafer: Nylon 6T,UL94V-0
 Color: Natural(Beige)

Ordering Information & Dimensions

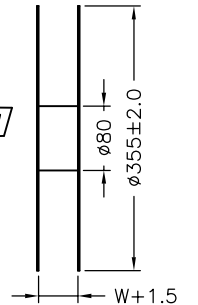
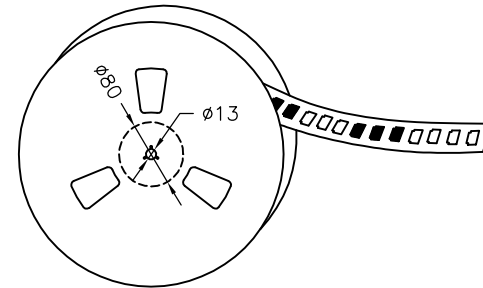
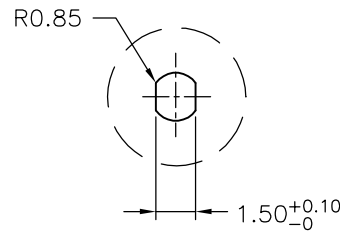
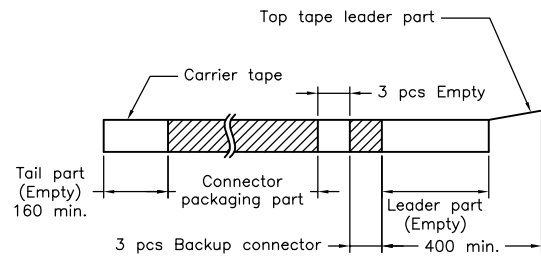
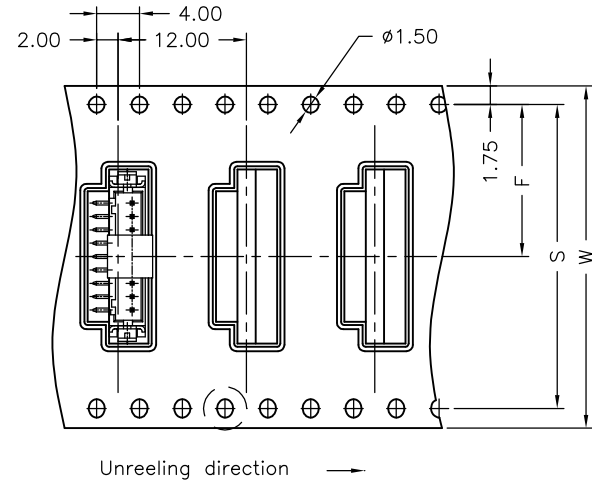
PART NO.	Dimensions		
	A	B	C
A1252WV-SF-02PD01	1.25	4.15	6.25
A1252WV-SF-03PD01	2.50	5.40	7.50
A1252WV-SF-04PD01	3.75	6.65	8.75
A1252WV-SF-05PD01	5.00	7.90	10.00
A1252WV-SF-06PD01	6.25	9.15	11.25
A1252WV-SF-07PD01	7.50	10.40	12.50
A1252WV-SF-08PD01	8.75	11.65	13.75
A1252WV-SF-09PD01	10.00	12.90	15.00
A1252WV-SF-10PD01	11.25	14.15	16.25
A1252WV-SF-11PD01	12.50	15.40	17.50
A1252WV-SF-12PD01	13.75	16.65	18.75
A1252WV-SF-13PD01	15.00	17.90	20.00
A1252WV-SF-14PD01	16.25	19.15	21.25
A1252WV-SF-15PD01	17.50	20.40	22.50

		JOINT TECH ELECTRONIC IND. CO., LTD. JOY DAY INDUSTRIAL CO., LTD.	
UNIT	SCALE	SHEET	TITLE:
mm		1 of 2	1.25mm PITCH 180° SINGLE ROW WAFER- SMT TYPE
DRAWN BY	APPROVED BY		
李勤	董正一		
2006.05.31	2006.05.31		
GENERAL TOLERANCE			DRAW NO.: A1252WV-SF-XPD01
X. X±0.25	ANGLE±		
X. XX±0.15			
REV.	DESCRIPTION	DATE	REV. A0

02~08 Contacts



09~15 Contacts



Number of Contacts	W±0.3	F±0.1	S±0.1	Q'ty/Reel
02P	16	7.50	/	1,000
03P	16	7.50		1,000
04P	24	11.50		1,000
05P	24	11.50		1,000
06P	24	11.50		1,000
07P	24	11.50		1,000
08P	24	11.50		1,000
09P	32	14.20		28.40
10P	32	14.20	28.40	1,000
11P	32	14.20	28.40	1,000
12P	32	14.20	28.40	1,000
13P	32	14.20	28.40	1,000
14P	44	20.20	40.40	1,000
15P	44	20.20	40.40	1,000

		UNIT	SCALE	SHEET	TITLE:
		mm		2 of 2	
DRAWN BY		APPROVED BY		1.25mm PITCH 180° SINGLE ROW WAFER- SMT TYPE TAPING SPEC.	
李勤		董正一			
2006.05.31		2006.05.31			
GENERAL TOLERANCE					
X. X±0.25		ANGLE±		DRAW NO. : A1252WV-SF-XP001	
X. XX±0.15					
X. XXX±0.05				REV. A0	
AO	NEW RELEASE	2006.05.31			
REV.	DESCRIPTION	DATE			