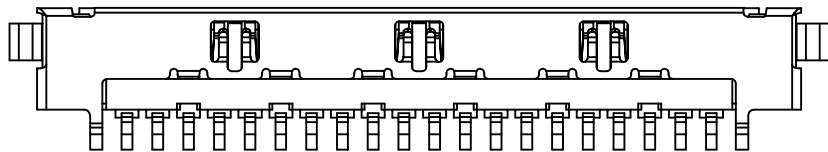
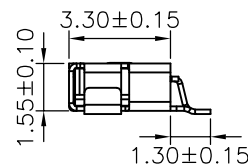
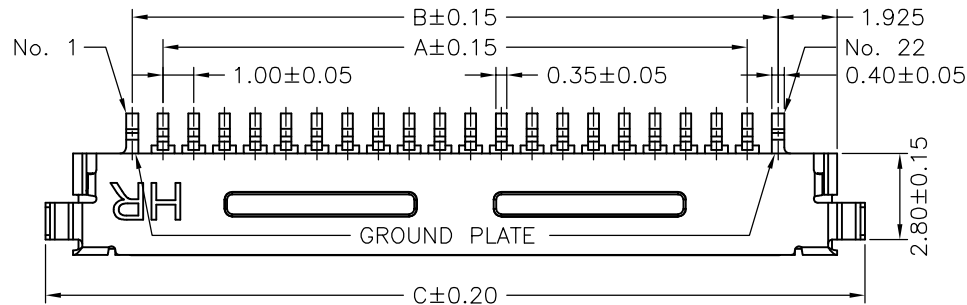
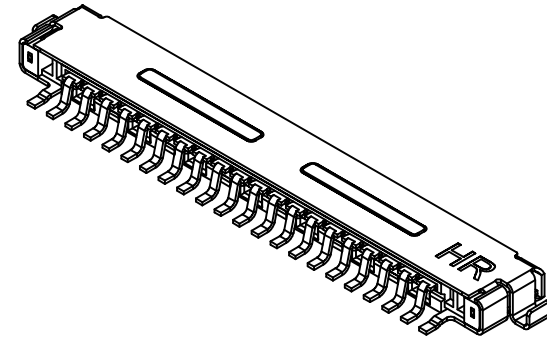


P.C.B. LAYOUT



SPECIFICATIONS

Current Rating: 1A AC,DC
 Voltage Rating: 200V AC,DC
 Temperature Range: -25°C ~ +85°C
 Contact Resistance: 40mΩ Max.
 Insulation Resistance: 100MΩ Min.
 Withstanding Voltage: 500V AC/minute
 Pin Material: Phosphor Bronze/Gold-plated
 Material: LCP,UL94V-0
 Shell: Phosphor Bronze/Tin-plated
 Color: Natural(Beige)

Ordering Information & Dimensions

| PART NO. | Dimensions | | |
|---------------|------------|-------|-------|
| | A | B | C |
| A1006WR-S-20P | 19.00 | 21.00 | 26.65 |
| A1006WR-S-30P | 29.00 | 31.00 | 36.65 |

| | | | | | | | |
|-------------------|-------------|-------------|------------|--|-------|--------|--------|
| | | | | UNIT | SCALE | SHEET | TITLE: |
| | | | | mm | | 1 of 2 | |
| DRAWN BY | | APPROVED BY | | 1.00mm PITCH 90° WAFER-SMT TYPE | | | |
| 蕭惠服 | | 董正一 | | | | | |
| 2003.01.08 | | 2003.01.08 | | DRAW NO. : A1006WR-S-XP | | | |
| GENERAL TOLERANCE | | | | REV. B2 | | | |
| B2 | REVISE | 2007.01.18 | | | | | |
| B1 | REVISE | 2006.12.11 | X.X±0.25 | ANGLE± | | | |
| B0 | NEW RELEASE | 2005.12.12 | X.XX±0.15 | | | | |
| REV. | DESCRIPTION | DATE | X.XXX±0.05 | | | | |

