

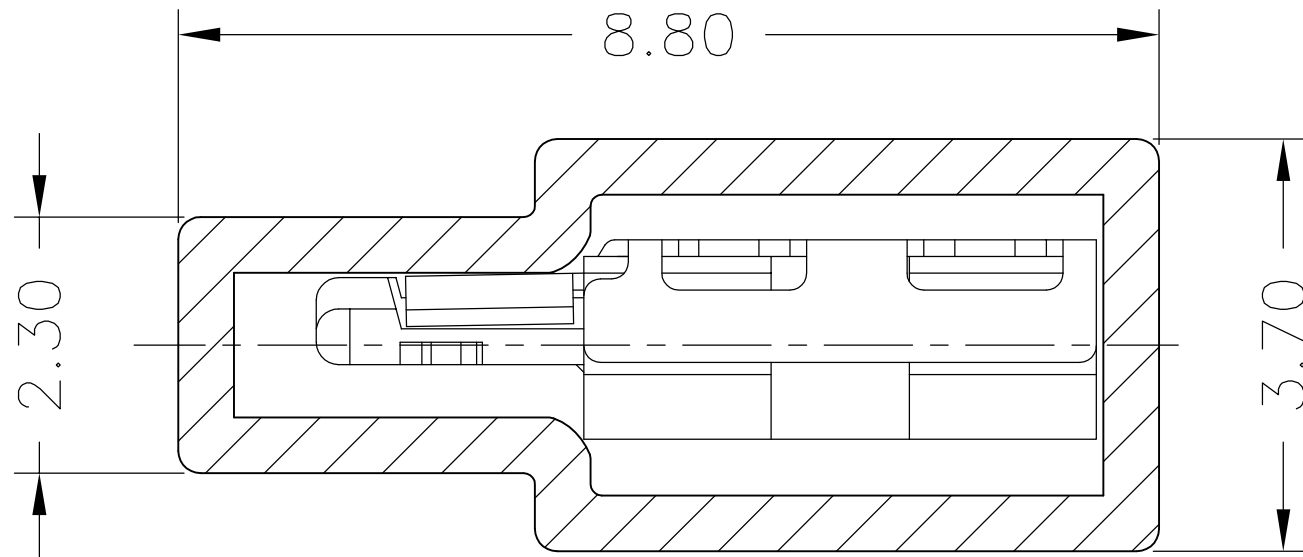
SPECIFICATIONS

Current Rating: 1A AC,DC
 Voltage Rating: 200V AC,DC
 Temperature Range: -25°C ~ +85°C
 Contact Resistance: 40mΩ Max.
 Insulation Resistance: 100MΩ Min.
 Withstanding Voltage: 500V AC/minute
 Shell: Phosphor Bronze/Nickel-plated
 Material: Nylon 46,UL94V-0
 Color: Natural(Beige)


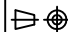
Ordering Information & Dimensions

PART NO.	Dimensions		
	A	B	C
A1006H-20P	19.00	21.88	23.28
A1006H-30P	29.00	31.88	33.28

		UNIT	SCALE	SHEET	1.00mm PITCH HOUSING
		mm		1 of 2	
		DRAWN BY	APPROVED BY		
		董正一	董正一		
B3	REVISE	2007.12.03	2002.07.25	2002.07.25	GENERAL TOLERANCE
B2	REVISE	2007.07.24			
B1	REVISE	2006.03.03	X.X±0.25	ANGLE±	
B0	NEW RELEASE	2005.12.12	X.XX±0.15		
REV.	DESCRIPTION	DATE	X.XXX±0.05		
				DRAW NO.:	REV.
				A1006H-XP	B3



Number of Contacts	Dimensions	Q'ty/Tube
20P	580X3.70X8.80	24
30P		16

			 JOINT TECH ELECTRONIC IND. CO., LTD. JOY DAY INDUSTRIAL CO., LTD.			
			UNIT	SCALE	SHEET	TITLE:
			mm		2 of 2	
			DRAWN BY	APPROVED BY		1.00mm PITCH HOUSING, TUBE SPEC.
			董正一	董正一		
			2005.06.28	2005.06.28		
			GENERAL TOLERANCE			
			X. X±0.25	ANGLE±		DRAW NO. : A1006H-XP
			X. XX±0.15			
BO	NEW RELEASE	2005.12.12	X. XXX±0.05			REV. BO
REV.	DESCRIPTION	DATE				