

SPECIFICATIONS

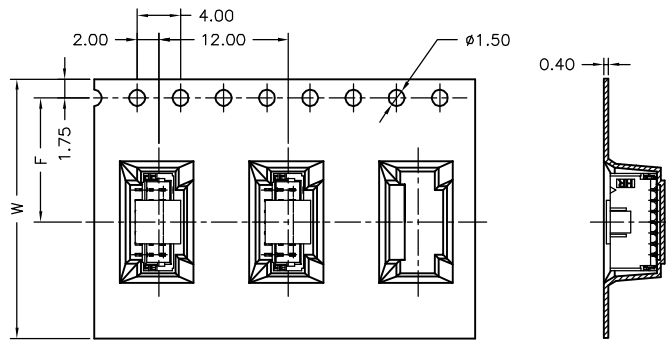
Current Rating: 1A AC,DC
 Voltage Rating: 50V AC,DC
 Temperature Range: -25°C ~ +85°C
 Contact Resistance: 20mΩ Max.
 Insulation Resistance: 100MΩ Min.
 Withstanding Voltage: 500V AC/minute
 Pin Material: Phosphor Bronze/Tin-plated
 Solder Tabs: Brass/Tin-plated
 Material: Nylon 6T,UL94V-0
 Cap: Nylon 6T,UL94V-0,Natural(Beige)
 Color: Natural(Beige)

Ordering Information & Dimensions

PART NO.	Dimensions	
	A	B
A1001WV-S-02P	1.00	4.00
A1001WV-S-03P	2.00	5.00
A1001WV-S-04P	3.00	6.00
A1001WV-S-05P	4.00	7.00
A1001WV-S-06P	5.00	8.00
A1001WV-S-07P	6.00	9.00
A1001WV-S-08P	7.00	10.00
A1001WV-S-09P	8.00	11.00
A1001WV-S-10P	9.00	12.00
A1001WV-S-11P	10.00	13.00
A1001WV-S-12P	11.00	14.00
A1001WV-S-13P	12.00	15.00
A1001WV-S-14P	13.00	16.00
A1001WV-S-15P	14.00	17.00
A1001WV-S-16P	15.00	18.00
A1001WV-S-17P	16.00	19.00
A1001WV-S-18P	17.00	20.00
A1001WV-S-19P	18.00	21.00
A1001WV-S-20P	19.00	22.00

					JOINT TECH ELECTRONIC IND. CO., LTD. JOY DAY INDUSTRIAL CO., LTD.	
			UNIT	SCALE	SHEET	TITLE:
			mm		1 of 2	1.00mm PITCH 180° WAFER-SMT TYPE
			DRAWN BY	APPROVED BY		
			蕭惠鳳	董正一		
			2002.05.28	2002.06.03		
B2	REVISE	2008.05.06	GENERAL TOLERANCE			
B1	REVISE	2007.07.13	X. X±0.25	ANGLE±		
B0	NEW RELEASE	2006.04.14	X. XX±0.15			
REV.	DESCRIPTION	DATE	X. XXX±0.05			
			DRAW NO. :		REV.	
			A1001WV-S-XP		B2	

02~13 Contacts



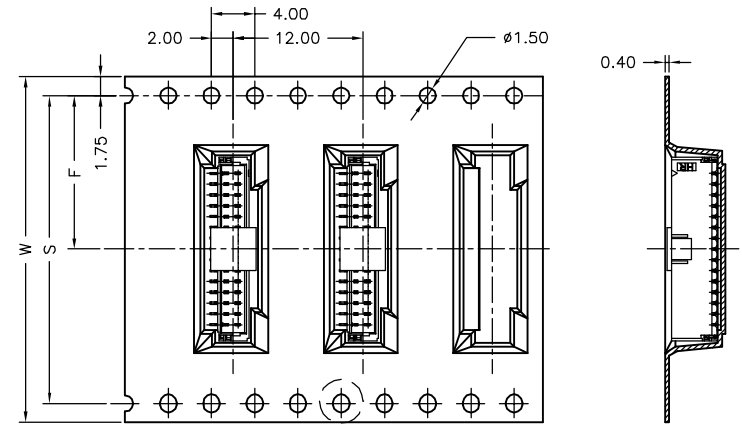
Unreeling direction →



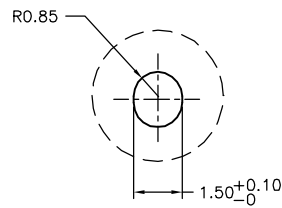
06~13 Contacts

02~05 Contacts

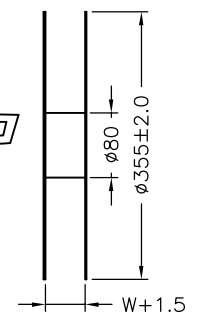
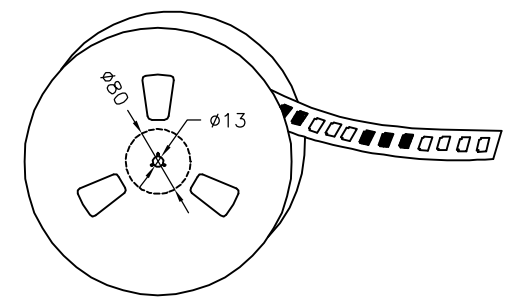
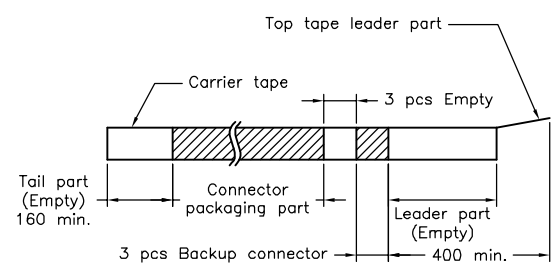
14~20 Contacts



Unreeling direction →



Number of Contacts	W±0.3	F±0.1	S±0.1	Q'ty/Reel
02P	16	7.50		1,000
03P	16	7.50		1,000
04P	16	7.50		1,000
05P	16	7.50		1,000
06P	24	11.50		1,000
07P	24	11.50		1,000
08P	24	11.50		1,000
09P	24	11.50		1,000
10P	24	11.50		1,000
11P	24	11.50		1,000
12P	24	11.50		1,000
13P	24	11.50		1,000
14P	32	14.20	28.40	1,000
15P	32	14.20	28.40	1,000
16P	32	14.20	28.40	1,000
17P	32	14.20	28.40	1,000
18P	32	14.20	28.40	1,000
19P	32	14.20	28.40	1,000
20P	44	20.20	40.40	1,000



				UNIT	SCALE	SHEET	TITLE:
				mm		2 of 2	
DRAWN BY		APPROVED BY		1.00mm PITCH 180° WAFER-SMT TYPE TAPING SPEC.			
董正一		董正一					
2004.12.29		2004.12.29		DRAW NO. : A1001WV-S-XP			
GENERAL TOLERANCE				REV. B1			
B1	REVISE	2007.07.13	X.X±0.25	ANGLE±			
B0	NEW RELEASE	2006.04.14	X.XX±0.15				
REV.	DESCRIPTION	DATE	X.XXX±0.05				