

P.C.B. LAYOUT

SPECIFICATIONS

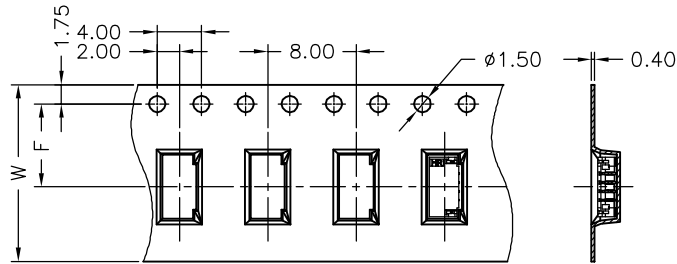
Current Rating: 0.5A AC,DC
 Voltage Rating: 30V AC,DC
 Temperature Range: -25°C ~ +85°C
 Contact Resistance: 20mΩ Max.
 Insulation Resistance: 100MΩ Min.
 Withstanding Voltage: 200V AC/minute
 Pin Material: Phosphor Bronze/Tin-plated
 Solder Tabs: Phosphor Bronze/Tin-plated
 Material: Nylon 6T,UL94V-0
 Color: Natural(Beige)

Ordering Information & Dimensions

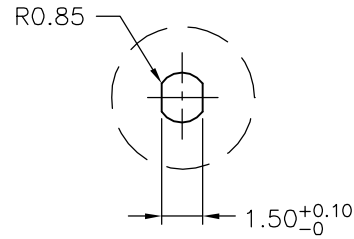
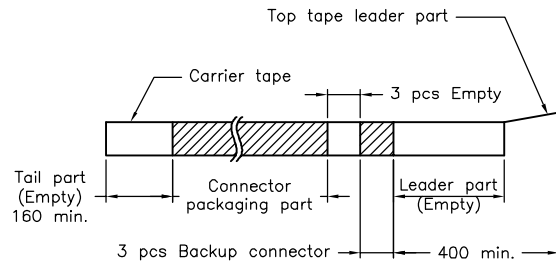
PART NO.	Dimensions	
	A	B
A0800WR-S-02P	0.80	3.80
A0800WR-S-03P	1.60	4.60
A0800WR-S-04P	2.40	5.40
A0800WR-S-08P	5.60	8.60
A0800WR-S-10P	7.20	10.20
A0800WR-S-12P	8.80	11.80
A0800WR-S-14P	10.40	13.40
A0800WR-S-15P	11.20	14.20
A0800WR-S-16P	12.00	15.00
A0800WR-S-17P	12.80	15.80
A0800WR-S-20P	15.20	18.20

				JOINT TECH ELECTRONIC IND. CO., LTD. JOY DAY INDUSTRIAL CO., LTD.	
		UNIT	SCALE	SHEET	TITLE:
		mm		1 of 2	
		DRAWN BY	APPROVED BY		
		李勤	董正一		
A3	REVISE	2007.10.12	2006.02.07	2006.02.07	
A2	REVISE	2007.07.26	GENERAL TOLERANCE		
A1	REVISE	2006.04.15	X. X±0.25	ANGLE±	
A0	NEW RELEASE	2006.02.07	X. XX±0.15		
REV.	DESCRIPTION	DATE	X. XXX±0.05		
				0.80mm PITCH 90° WAFER-SMT TYPE	
				DRAW NO.:	REV.
				A0800WR-S-XP	A3

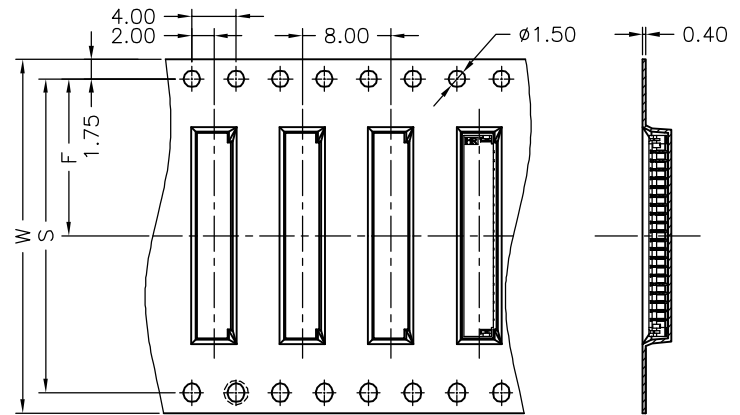
02~17 Contacts



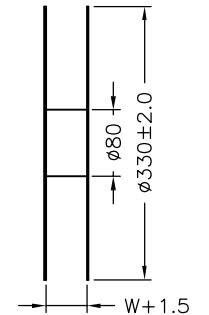
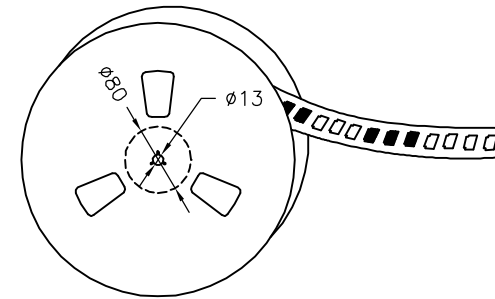
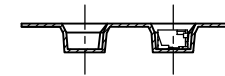
Unreeling direction →



20 Contacts



Unreeling direction →



Number of Contacts	W±0.3	F±0.1	S±0.1	Q'ty/Reel
02P	12	5.50	28.40	3,500
03P	12	5.50		3,500
04P	16	7.50		3,500
08P	24	11.50		3,500
10P	24	11.50		3,500
12P	24	11.50		3,500
14P	24	11.50		3,500
15P	24	11.50		3,500
16P	24	11.50		3,500
17P	24	11.50		3,500
20P	32	14.20		3,500

		UNIT: mm	SCALE: 2 of 2
		DRAWN BY: 歐陽小強	APPROVED BY: 董正一
		2006.09.25	2006.09.25
GENERAL TOLERANCE			
A2	REVISE	2007.10.12	
A1	REVISE	2007.07.26	X. X±0.25
A0	NEW RELEASE	2006.09.25	X. XX±0.15
REV.	DESCRIPTION	DATE	X. XXX±0.05
			TITLE: 0.80mm PITCH 90° WAFER-SMT TYPE TAPING SPEC.
DRAW NO.:			REV. A2
A0800WR-S-XP			